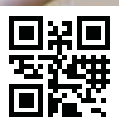




Wellness & spa equipment
know-how for your well-being



JUST RELAX.

Take a bath in comforting warmth. Surround your body with gentle herbal steam and let your spirit inhale its mild aromas. Taking a sophisticated sauna is not a short-lived trend but part of a life philosophy that enhances the body's ability to stay healthy and well-balanced.

FULFIL INDIVIDUAL WISHES

For decades, EOS has been designing its sauna equipment with the individual desires of sauna enthusiasts in mind. Regardless of whether it is the classic Finnish sauna, the theme sauna, the herbal or the soft steam bath: We know what kind of demands the modern sauna must meet. Therefore, it is not surprising that EOS is Europe's leader in the commercial as well as in the private sector, when it comes to innovation, design and quality.

RELY ON OUR COMPETENCE.

On the following pages you will find everything you need to know about the current range of EOS sauna and steam equipment, interesting information about new trends, features and functions. The technical details will help you to quickly find the right models for your customers. Make your customers' dreams come true - by taking it the easy EOS way.

:: INNOVATIVE TECHNOLOGY AND
MARKET LEADING QUALITY

CONTENTS

04	Overview - dry (Finnish) heaters
06	Overview - Bi-O type heaters with vaporizer and accessories
08	Overview - sauna control units
10	Dry (Finnish) sauna heaters
36	Bi-O sauna heaters with vaporizer
50	Watermill Sauna heater
54	Sauna control units EOS Econ
64	Sauna control units EOS EmoTec
66	Sauna control units EOS EmoStyle
68	Sauna control units EOS EmoTouch
70	Extension modules
76	Power extension units (LSG)
78	Safety systems
80	Coloured light
82	Steam generators and accessories
90	Infrared radiators and equipment
100	SunSky / InfraSky
102	Flake ice machines E-Cool
104	Essence dosing systems
108	Sauna accessories
122	Important notes

:: FINNISH SAUNA HEATERS



EOS Mini W
Page 12-13 >



EOS M3 W
Page 12-13 >



EOS Filius / Filius Control W
Page 18-19 >



EOS Cubo / Cubo+
Page 20-21 >

NEW!



EOS Cubo
Avantgarde black
Page 20-21 >



EOS P1 / P1+
Page 20-21 >

NEW!



EOS BlackRock
Page 26-27 >

NEW!



EOS 34.G / 34.G HD
Page 26-27 >



EOS Goliath
Page 26-27 >





EOS Thermat W
Page 14-15 >



EOS ThermoTec S / W
Page 16-17 >



EOS 43FN
Page 14-15 >



NEW!
EOS Gracil / Gracil W
Page 18-19 >



EOS Euro
Page 24-25 >



EOS FinnRock /
Saunadome II
Page 22-23 >



NEW!
EOS Edge
Page 22-23 >



EOS Zeus S / SL
Page 24-25 >



EOS EuroMax
Page 24-25 >



NEW!
EOS 46.U / -XL /
-Compact
Page 32-33 >



EOS Zeus / Zeus L
Page 28-29 >



EOS Orbit
Page 28-29 >



NEW!
EOS Mega
Page 28-29 >



EOS Invisio XL / Midi / Mini
Page 30-31 >

:: BI-O SAUNA HEATERS



EOS Bi-O Mini W
Page 36-37 >



EOS Bi-O Filius W
Page 36-37 >



EOS Bi-O Thermat W
Page 38-39 >



EOS Bi-O Tec W
Page 38-39 >



EOS Bi-O Cubo
Page 40-41 >



EOS Bi-O Max
Page 40-41 >



EOS Bi-O Mat U
Page 42-43 >

NEW!



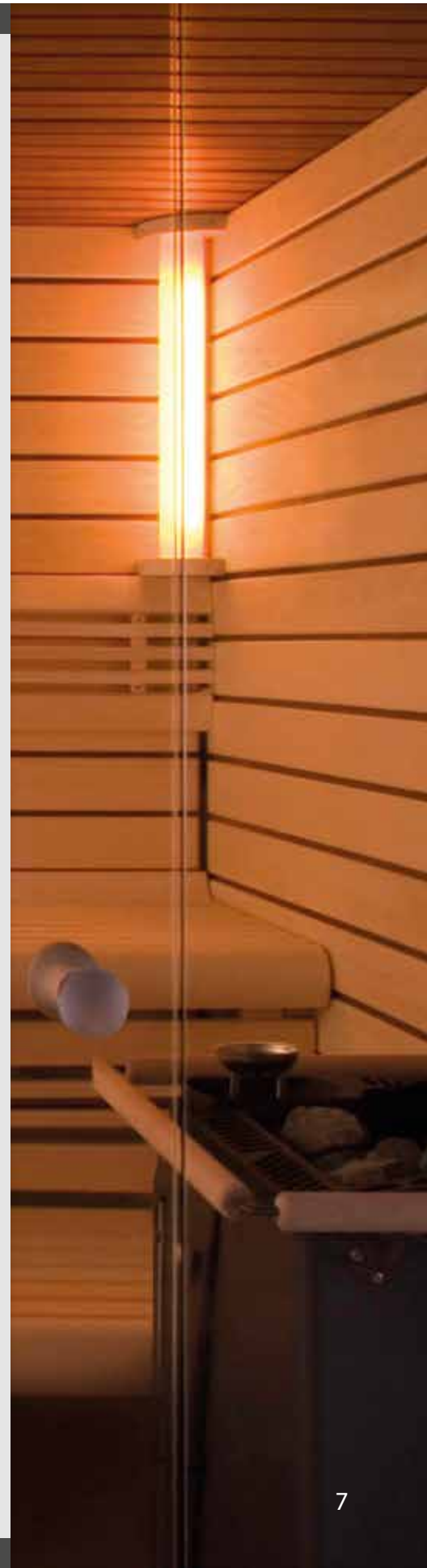
EOS Bi-O Gracil / Gracil W
Page 42-43 >



EOS Bi-O Invisio
Page 42-43 >



EOS Watermill Sauna
Page 48-49 >



:: SAUNA CONTROL UNITS



EOS Econ
D1 **H1**
 Finnish Bi-O
 Page 52 > Page 52 >



EOS Econ
D2 **H2**
 Finnish Bi-O
 Page 54 > Page 54 >



EOS Econ
D3 **H3**
 Finnish Bi-O
 Page 56 > Page 56 >



EOS EmoTec
D
 Finnish
 Page 60 >

EOS EmoTec
H
 Bi-O
 Page 60 >



EOS EmoStyle D
 Finnish
 Page 62 >

EOS EmoStyle H
 Bi-O
 Page 62 >



EOS Econ I1
 For IR-cabins
 Page 90 >



EOS EmoTec IR
 For IR-cabins
 Page 93 >



EOS InfraStyle / InfraStyle i
 For IR-cabins
 Page 93 >



**EOS Econ
D4**
Finnish
Page 58 >



**EOS Econ
S2**
For steam rooms
Page 82 >



EOS EmoStyle Hi
Bi-O
Page 63 >



EOS EmoTouch 3
For sauna, steam rooms, hammam and IR-cabins
Page 64 >



:: FINNISH SAUNA HEATERS

WHY AN EOS SAUNA HEATER

- :: Know-how and decades of experience of Europe's leading premium class manufacturer.
- :: Comprehensive model range from 3 to 72 kW.
- :: Large design variety in many price categories.
- :: Well-thought construction in every detail.
- :: Long-lasting products, robust and reliable.
- :: Extensive product support and service.
- :: Continuous quality control and product testing for safety and norm compliance, extra long warranty.
- :: „Made in Germany“ quality.



FOR TRADITIONAL FINNISH SAUNA



3,0

EOS Mini W wall-mounting

- :: Compact size sauna heater for saunas up to 5 m³.
- :: Very slim, space-saving design - only 20 cm depth.
- :: 3,0 kW power, single-phase power supply 230 V 1N.
- :: Available with polished stainless steel or anthracite finish outer shell.
- :: Rock store fits up to 8 kg stones.



3,0

EOS M3 W wall-mounting

- :: Built-in control unit for quick and easy settings.
- :: Temperature control range 40 - 110 °C.
- :: Recommended for saunas up to 5 m³.
- :: Very slim design - only 20 cm depth.
- :: Durable triple-shell stainless steel construction.
- :: 3,0 kW power, single-phase power supply 230 V 1N.
- :: Rock store fits up to 8 kg stones.



:: FINNISH SAUNA HEATERS

An icy cold winter's day or a mild summer's night - a bath in the sauna is always relaxing. With an EOS heater it is easy to feel comfortable in a rustic sauna made of solid wood or in an element sauna of a stylish design.

Already the Basic range offers a large variety of Finnish or vaporizer heaters available as floor-standing or wall-mounting heaters in various designs.

EOS sauna heaters stand out through their well-thought construction, choice of top quality materials and meticulous attention to every detail.

The excellent convection of the EOS heaters provides optimum air circulation in the cabin and thus creates a pleasant sauna climate. All sauna heaters from EOS are of course supplied with the special olivine diabase sauna stones.

Model	Item no.	Size (H x W x D)	Power
EOS Mini W Stainless steel	94.5650	500 x 300 x 215 mm	3,0 kW
EOS Mini W Anthracite	94.6028		
EOS M3 W Stainless steel	94.1921	600 x 300 x 200 mm	3,0 kW
EOS M3 W Anthracite	94.7348		

:: FINNISH SAUNA HEATERS

QUALITY IS ATTENTION TO EVERY DETAIL

For our sauna heaters we use a special high quality powder coating with anthracite pearl effect finish. This powder coating is applied on the sauna heater shell in a complex process and then literally baked on it under very high temperatures. The result is a smooth, slightly shimmering surface with anthracite-grey colour.

Powder coated surfaces are considerably more scratch resistant in comparison to the wet paint and provide sauna heaters an attractive, contemporary design.

Model	Item no.	Size (HxWxD)	Power
EOS Thermat W	94.5479	580 x 375 x 380 mm	4,5 kW
	94.5480		6,0 kW
	94.5481		7,5 kW
	94.5482		9,0 kW
EOS 43FN	94.2234	710 x 420 x 360 mm	6,0 kW
	94.2235		7,5 kW
	94.2236		9,0 kW



4,5

6,0

7,5

9,0

EOS Thermat W wall-mounting

- :: Wall-mounting heater for domestic saunas 5 to 14 m³.
- :: Elegant die-cast aluminium top.
- :: Anthracite pearl effect finish.
- :: Rock store fits up to 15 kg stones.



6,0

7,5

9,0

EOS 43FN floor-standing -/wall-mounting

- :: Floor-standing heater for domestic saunas from 6 to 14 m³.
- :: Anthracite pearl effect finish.
- :: Reinforced construction. Stainless steel top cover and deflector.
- :: Rock store fits up to 15 kg stones.



- 6,0
- 7,5
- 9,0

EOS ThermoTec W wall-mounting

- :: Wall-mounting sauna heater for domestic saunas from 5 to 14 m³.
- :: With an elegant, curved die-cast aluminium top cover with integrated holders for optional essence cup holder or aroma tray.
- :: Stainless steel inner shell, reinforced construction.
- :: Rock store fits up to 18 kg stones.



- 6,0
- 7,5
- 9,0

EOS ThermoTec S floor-standing

- :: Floor-standing version based on the EOS ThermoTec W model.
- :: With an elegant, curved die-cast aluminium top cover with integrated holders for optional essence cup holder or aroma tray.
- :: Stainless steel inner shell, reinforced construction.
- :: Rock store fits up to 18 kg stones.



For optional accessories for ThermoTec series sauna heaters see page 49.

:: FINNISH SAUNA HEATERS

AIR CONVECTION - THE KEY TO THE PROPER SAUNA OPERATION

Effective, stable air convection is essential for the proper operation of every sauna cabin.

Good air convection ensures that the heat from the stove spreads quickly around the cabin and the sauna is ready for use faster. Properly circulating air means continuous air exchange and proper cooling of the stove preventing its overheating.

EOS sauna heaters are designed to ensure and promote the best possible air convection. Heating elements are either completely separated from the stones or only have contact lightly. The space between the inner and the outer shell serves as a natural air channel.

This ensures a stable and continuous air flow. The heating elements do not get overheated which greatly extends their service life. Also the overall lifetime of the stove improves.

At the same time EOS sauna heaters feature an optimized rock store size with the well balanced quantity of stones. This ensures good air circulation on one side and the large enough stone volume for powerful water splashes on the other side.

Model	Item no.	Size (H x W x D)	Power
EOS ThermoTec W	94.5688	600 x 375 x 380 mm	6,0 kW
	94.5689		7,5 kW
	94.5690		9,0 kW
EOS ThermoTec S	94.5684	780 x 375 x 380 mm	6,0 kW
	94.5685		7,5 kW
	94.5686		9,0 kW

:: FINNISH SAUNA HEATERS

Model	Item no.	Size (H x W x D)	Power
EOS Filius W	94.5031	570 x 400 x 240 mm	4,5 kW
	94.5032		6,0 kW
	94.5033		7,5 kW
EOS Filius Control W	94.6038	570 x 400 x 240 mm	4,5 kW
	94.6039		6,0 kW
	94.6040		7,5 kW



4,5

6,0

7,5

EOS Filius W wall-mounting

- :: Finnish sauna heater for domestic saunas from 4 to 10 m³
- :: Very slim - only 24 cm depth, direct mounting to the sauna wall
- :: Modern, timeless design. Brushed stainless steel top, outer shell in anthracite pearl effect finish.
- :: Rock store fits up to 8 kg stones.



4,5

6,0

7,5

EOS Filius Control W built-in controls

- :: Compact wall-mounting heater with built-in control unit (temperature and heating time control).
- :: Control unit at the top side for quick and simple operation.
- :: Very slim - only 24 cm depth, direct mounting to the wall.
- :: Rock store fits up to 8 kg stones.

:: FINNISH SAUNA HEATERS



6,0

7,5

9,0

*Heater guard rail
optionally available*

EOS Gracil floor-standing

- :: Very space-saving – only 25 cm depth
- :: Flat rear side with recessed terminal box.
- :: Outer shell: anthracite pearl effect finish or matt black powder coating
- :: Optional rear side cover panel in black or anthracite finish - great for installation in front of glass walls
- :: Full size 20 kg rock store despite very shallow construction.



EOS Gracil W wall-mounting

- :: Very space-saving – only 27.5 cm depth
- :: Wall mounting with only 3 cm gap to the wall
- :: Outer shell: anthracite pearl effect finish or matt black powder coating
- :: Optional wooden guard rail with direct mounting on the heater
- :: Dust & debris collecting tray at the bottom to keep sauna tidy
- :: Full size 20 kg rock store despite very shallow construction.





Model	Item no.	Size (H x W x D)	Power
EOS Gracil	94.6755	760 x 505 x 250 mm	6,0 kW
	94.6756		7,5 kW
	94.6757		9,0 kW
EOS Gracil black	94.7243	760 x 505 x 250 mm	7,5 kW
	94.7244		9,0 kW
EOS Gracil W	94.7157	740 x 505 x 275 mm	6,0 kW
	94.7158		7,5 kW
	94.7159		9,0 kW
EOS Gracil W black	94.7245	740 x 505 x 275 mm	7,5 kW
	94.7246		9,0 kW



9,0

10,5

12,0

EOS Cubo Avantgarde black

- :: Robust, durable and service-friendly construction.
- :: Luxurious matt black finish on all sides.
- :: Uniform appearance on all sides - perfect for installation in front of glass panel or in the centre of the sauna.
- :: With rock store extension frame, 15 kg rounded white quartz stones included in the delivery.



7,5

9,0

10,5

12,0

EOS Cubo EOS Cubo+

EOS Cubo/Cubo+ floor-standing

- :: Modern design heater for sauna rooms from 7 to 18 m³.
- :: Suitable for domestic and commercial use.
- :: Compact foot print 40 x 39 cm thanks to the recessed terminal box.
- :: Rock store above the heating elements - for improved air convection, longer lifetime of heating elements, simplified servicing.
- :: Outer shell in anthracite pearl effect finish.
- :: Brushed stainless steel top.
- :: Optional guard rail mounting brackets.
- :: EOS Cubo - rock store fits approx. 25 kg stones.
- :: EOS Cubo Plus - extra-large rock store fits approx. 40 kg stones.



EOS P1

EOS P1+

10,5

12,0

15,0

EOS P1 / P1+ floor-standing

- :: Sauna heater for commercial saunas 10 to 25 m³.
- :: Robust, durable construction of stainless steel.
- :: Polished chrome steel outer shell - EOS P1 or anthracite finish - EOS P1+.
- :: Optimized air convection for faster heat-up times.
- :: Slim design - only 380 mm depth.
- :: EOS P1 - 30 kg rock store, EOS P1+ - 40 kg rock store volume.



Rear side cover for EOS Cubo/Cubo+
Optionally available for EOS Cubo/Cubo+ heaters, rear side cover in anthracite finish - ideal e.g. for installation in front of glass.

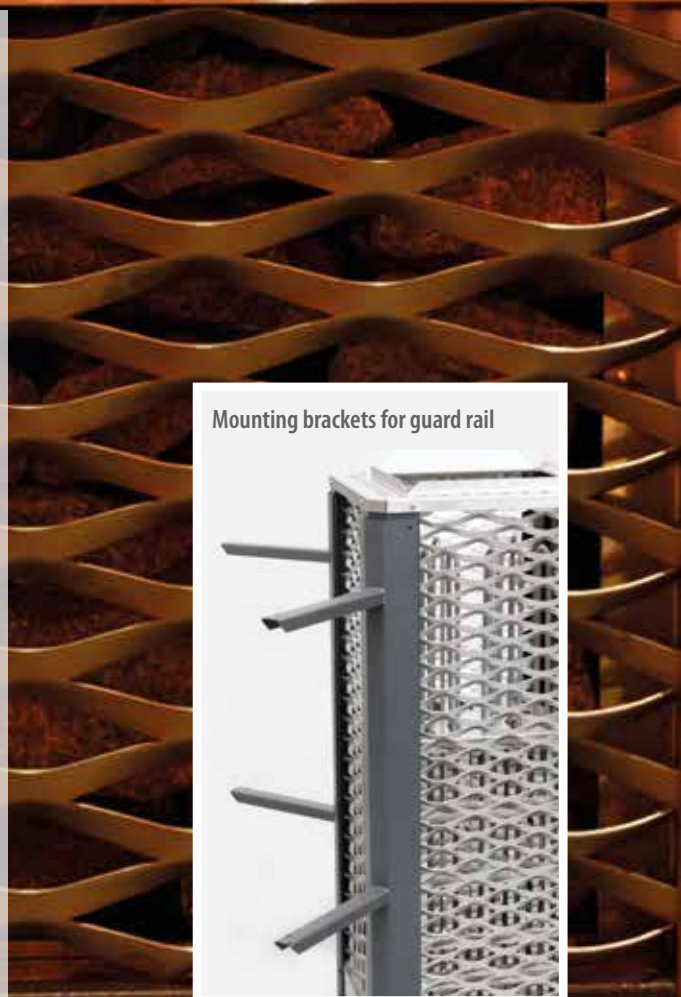
:: FINNISH SAUNA HEATERS

Model	Item no.	Size (HxWxD)	Power
EOS Cubo	94.5073	720 x 400 x 385 mm	7,5 kW
	94.5074		9,0 kW
	94.6592		10,5 kW
	94.5075		12,0 kW
EOS Cubo+	94.5974	950 x 400 x 385 mm	7,5 kW
	94.5975		9,0 kW
	94.5976		10,5 kW
	94.5977		12,0 kW
EOS Cubo Avantgarde black	94.7109	720 x 400 x 385 mm	9,0 kW
	94.7369		10,5 kW
	94.7110		12,0 kW
EOS P1	94.2830	720 x 630 x 380 mm	10,5 kW
	90.8775		12,0 kW
	90.8776		15,0 kW
EOS P1+	94.6384	720 x 630 x 380 mm	9,0 kW
	94.6383		10,5 kW
	94.6382		12,0 kW
	94.6381		15,0 kW

:: FINNISH SAUNA HEATERS



Model	Item no.	Size (H x W x D)	Power
EOS FinnRock	94.3931	760 x 413 x 385 mm	7,5 kW
	94.3932		9,0 kW
	94.3933		12,0 kW
Dekorrückwand	94.5566	for EOS FinnRock	
EOS Saunadome II	94.5603	1000 x 400 x 400 mm	9,0 kW
	94.5604		12,0 kW
	94.5605		15,0 kW
	94.5606		18,0 kW
EOS Edge	94.6976	980 x 350 x 350 mm	6,0 kW
	94.6977		7,5 kW
	94.6978		9,0 kW
Side cover panel, anthracite	94.7115	for EOS Edge	
Side cover panel, black matt	94.7116		





7,5

9,0

12,0

EOS FinnRock floor-standing

- :: Premium class designer sauna heater for domestic and commercial saunas from 7 to approx. 18 m³.
- :: Unique design thanks to the partially open rock store with a special design front side grill. Compact footprint - 40 x 39,5 cm size.
- :: Very robust construction, completely made of stainless steel.
- :: Optional guard rail mounting brackets.
- :: Rear side cover in anthracite pearl effect finish optionally available.
- :: Rock store above the heating elements - for improved air convection, longer lifetime of heating elements and simplified servicing.
- :: Extra large rock store with 40 kg volume.

EOS Saunadome II floor-standing

- :: Upmarket category sauna heater in unique „Tower“ design for domestic and commercial sauna rooms from 10 to approx. 30 m³.
- :: 100 kg rock store - ideal for frequent, powerful water splashes and high temperature stability.
- :: Rock store open on all sides - allows water splashes from any side.
- :: Optimal for central placement or installation in front of glass walls.
- :: High safety - thanks to specially angled side frame the stones and water remain inside the rock store and may not fall out of the heater.
- :: Very high heat storage capacity.



9,0

12,0

15,0

18,0



6,0

7,5

9,0

EOS Edge floor-standing

- :: Stylish sauna heater in „tower“ design with the rock store open on all sides.
- :: Very compact size - only 35 x 35 cm footprint.
- :: Durable stainless steel housing, adjustable feet.
- :: Optional side cover panels with anthracite or black finish can be added on 1- 4 sides.
- :: Up to approx. 115 kg stone volume.

Optional side cover panels with anthracite or black finish.

Mounting brackets for guard rail

Allows to mount a custom-design wooden guard rail directly to the heater. Ideal for installation e.g. in front of glass.

- 7,5
- 9,0
- 10,5
- 12,0



EOS Euro floor-standing /wall-mounting

- :: Upper class sauna heater for sauna rooms from 7 to 18 m³.
- :: With the optional feet may be used as a floor-standing model.
- :: Space-saving design - only 35 cm depth.
- :: Durable triple-shell construction, all made of stainless steel.
- :: Massive die-cast iron top, polished chrome steel outer shell.
- :: Rock store fits up to 15 kg stones.

EOS EuroMax floor-standing

- :: Premium class sauna heater for domestic and commercial sauna rooms from 9 to approx. 25 m³.
- :: Extra-large rock store with enlarged side air channels ensures top-performance at all times.
- :: Reinforced, extra durable construction, made of stainless steel.
- :: Elegant, curved die-cast aluminium top with holders for optional herbs bowl or essence tray.
- :: Rock store (60 kg stone volume) above the heating elements, which may be replaced without removing the stones.



Aroma tray and herbs bowl are optionally available.



- 9,0
- 12,0
- 15,0

- 6,0
- 7,5
- 9,0
- 10,5
- 12,0



EOS Zeus S

EOS Zeus SL

EOS Zeus S / SL floor-standing

- :: Luxury class sauna heater with the distinctive round-shaped design. Suitable for domestic and commercial use.
- :: Ideal for compact or mid-sized saunas.
- :: Choice of 2 designs - EOS Zeus S and EOS Zeus SL.
- :: The highlight of EOS Zeus S is the unique laser-cut solid steel housing with approx. 25 kg rock store. The optionally available matching design round shape protective rail in 360° or 270° sets the crowning touch to the spectacular design of this model.
- :: Finish - red-brown powder coating in „rusty“ design.
- :: Safety guard rail - optionally available (rail and mounting brackets to be ordered separately).

:: FINNISH SAUNA HEATERS



Model	Item no.	Size (H x W x D)	Power
EOS Euro	90.7686	610 x 460 x 350 mm	7,5 kW
	90.7687		9,0 kW
	94.5185		10,5 kW
	94.8076		12,0 kW
Feet	90.7110	Height with feet 760 mm	
EOS EuroMax	94.2320	900 x 500 x 500 mm	9,0 kW
	94.2321		12,0 kW
	94.3882		15,0 kW
EOS Zeus S	94.7010	Ø 450 x 1000 mm	6,0 kW
	94.7011		7,5 kW
	94.7012		9,0 kW
	94.7013		10,5 kW
	94.7014		12,0 kW
EOS Zeus SL	94.7015	Ø 450 x 700 mm	6,0 kW
	94.7016		7,5 kW
	94.7017		9,0 kW
	94.7018		10,5 kW
	94.7019		12,0 kW

:: FINNISH SAUNA HEATERS

Model	Item no.	Size (HxWxD)	Power
EOS BlackRock	94.7140	830 x 555 x 555 mm	12,0 kW
	94.7141		15,0 kW
	94.7142		18,0 kW
EOS BlackRock black	94.7312		12,0 kW
	94.7313		15,0 kW
	94.7314		18,0 kW
Vaporizer	94.7230 / 7324	3,0 kW, anthracite / black	
EOS 34.G Type 1	90.8586	950 x 750 x 530 mm	15,0 kW
	90.8587		18,0 kW
	90.8588		21,0 kW
EOS 34.G Type 2	90.8589	950 x 1000 x 530 mm	24,0 kW
	90.8590		27,0 kW
	90.8591		30,0 kW
	90.8592		36,0 kW
EOS 34.G HD	94.7360	950 x 1000 x 530 mm	24,0 kW
	94.7361		27,0 kW
	94.7362		30,0 kW
	94.7363		36,0 kW
EOS Goliath	94.4805	825 x 960 x 470 mm	18,0 kW
	94.4806		24,0 kW
	94.4807		30,0 kW
	94.4808		36,0 kW



Accessories



Stack frame for additional 30 - 45 kg stones, for EOS 34.G heaters



Stack frame for additional 30 - 45 kg stones and cover protection rail with direct heater mounting.



12,0

15,0

18,0



Image shows
EOS BlackRock anthracite

EOS BlackRock floor-standing

- :: Premium class sauna heater for intensive commercial use.
- :: Durable construction made of stainless steel.
- :: High-contrast design with side panels with anthracite finish and corners made of polished stainless steel. Top cover of polished stainless steel or "Black Line" design with all sides and top with stylish matt black finish.
- :: Looks the same on all sides, no typical rear side - ideal for installation in front of glass panels or for central position. Cable connection on the bottom.
- :: Thanks to an optional vaporizer 3,0 kW, BlackRock can also be used as Bi-0 version for humid sauna operation. Retrofitting possible on site.
- :: Rock store fits approx. 40 kg stones.

EOS 34.G / 34.G HD floor-standing

- :: Commercial sauna heater for large saunas up to 75 m³.
- :: Exceptionally robust and durable construction in two sizes, completely made of stainless steel.
- :: Terminal box with ceramic terminals at the rear side.
- :: No contact between sauna stones and heating elements for improved heating performance and longer service life of heating elements. Innovative V-shape supports under the stone compartment prevent water flowing through after a water splash.
- :: Rock store may be enlarged with optional stack frame (30 - 45 kg).
- :: **EOS 34.G HD:** "Heavy-duty" version with copper rails as standard inner wiring and therefore perfectly suitable for saunas with particular intensive use.



15,0

18,0

21,0

24,0

27,0

30,0

36,0

- Size 1: 15,0 - 21,0 kW (30 kg rock store volume)
- Size 2: 24,0 - 36,0 kW (45 kg rock store volume)

18,0

24,0

30,0

36,0



EOS Goliath floor-standing

- :: Modern, design-oriented sauna heater for large saunas up to 75 m³.
- :: Optimal for very intensive commercial operation.
- :: Very robust and durable, completely made of stainless steel. Reinforced frame construction.
- :: Optional brackets for heater guard rail mounted directly on the heater.
- :: External shell in anthracite pearl effect finish. Brushed stainless steel top. Terminal box with ceramic terminals.
- :: No contact between sauna stones and heating elements for improved heating performance and longer service life of heating elements.
- :: Rock store fits approx. 75 kg stones.



Guard rail mounting brackets

Optional mounting brackets allow to mount a wooden guard rail in own design directly on the EOS Goliath heater.

:: FINNISH SAUNA HEATERS

Model	Item no.	Size (H x W x D)	Power
EOS Orbit	94.6419	Ø 750 x 810 mm	12,0 kW
	94.6420		15,0 kW
	94.6421		18,0 kW
	94.6422		21,0 kW
	94.6423		24,0 kW
EOS Zeus	94.6452	Ø 750 x 1250 mm	12,0 kW
	94.6453		16,0 kW
	94.6454		20,0 kW
	94.6455		24,0 kW
	94.6457		30,0 kW
	94.6458		36,0 kW
EOS Zeus L	94.6695	Ø 750 x 790 mm	12,0 kW
	94.6696		16,0 kW
	94.6697		20,0 kW
	94.6698		24,0 kW
	94.6699		30,0 kW
	94.6700		36,0 kW

Safety guard rail for EOS Zeus heaters

Safety guard rail 360° Walnut	94.6598
Safety guard rail 270° Walnut	94.6597
Safety guard rail 360° Abachi	94.6606
Safety guard rail 270° Abachi	94.6605

Safety guard rail for EOS Orbit heaters

Safety guard rail 360° Walnut	94.6900
Safety guard rail 270° Walnut	94.6894
Safety guard rail 360° Abachi	94.6896
Safety guard rail 270° Abachi	94.6890

Model	Item no.	Size (H x W x D)	Power
EOS Mega	94.6909	1000 x 1200 x 800 mm	42,0 kW
	94.6908		48,0 kW
	94.6907		54,0 kW
	94.6906		60,0 kW
	94.6905		72,0 kW

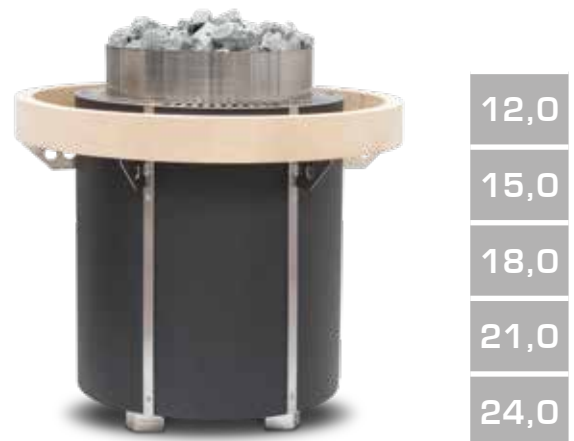
EOS Zeus / Zeus L floor-standing



- :: Designer luxury class sauna heater for saunas up to 75 m³.
- :: Suitable for very intensive commercial operation.
- :: Spectacular round shaped design with the „rusty“ powder coating finish. High precision laser cut housing.
- :: Alternatively available in anthracite pearl effect finish.
- :: Choice of 2 designs - EOS Zeus and EOS Zeus L.
- :: Optional round shape safety guard rail in matching design. The guard rail is available in different wood sorts and in 270° or 360° design (Ø 940 mm diameter).
- :: Durable construction with the massive 8 mm steel wall.
- :: Extra large rock store with up to 100 kg volume.
- :: Great for installation in front of glass or for central position.
- :: Includes pre-mounted double-line connection cable with special heavy-duty connectors.

EOS Orbit floor-standing

- :: Commercial sauna heater for commercial saunas up to 40 m³.
- :: Timeless round-shape design, anthracite pearl effect finish.
- :: Ideal for central placement. Concealed cable connection.
- :: Optionally available round-shaped guard rail greatly enhances the visual appearance. Guard rail available in different wood sorts.
- :: Reinforced stainless steel construction with improved air convection performance. Very robust and durable.
- :: Rock store with up to 40 kg volume.



EOS Mega floor-standing

- :: Sauna heater for very large sauna cabins up to 160 m³. For dry Finnish sauna type.
- :: Unique power range from 42 to 72 kW at only 1.2 m² space.
- :: Specially designed for intensive commercial operation in event sauna cabins, e.g. with regular water splash events.
- :: Rock store with approx. 120 kg volume separated from heating elements. Unique V-shape profiles in two layers as rock store bottom ensure effective water evaporation and improved air flow.
- :: Durable stainless steel construction. Anthracite pearl effect finish.
- :: Uniform appearance on all sides - no typical "rear" side, ideal for central placement.

**World's most powerful
electric sauna heater!**



9,0

12,0

EOS Invisio XL underbench heater

- :: Underbench sauna heater for domestic and commercial saunas.
- :: High safety and place-saving effect thanks to the concealed under-bench installation. Only 10 cm gap to the partition wall needed.
- :: Extra-large rock store with the water splash gutter across the full width. Includes water funnel, safety grill and pre-mounted cable.
- :: Extra-large rock store with up to 100 kg stone volume



6,0

9,0

12,0

EOS Invisio Midi underbench heater

- :: Underbench sauna heater for domestic and commercial saunas.
- :: Slim version - only 38 cm depth, 20 kg rock store.
- :: Rock store fits approx. 20 kg stones.



3,0

4,5

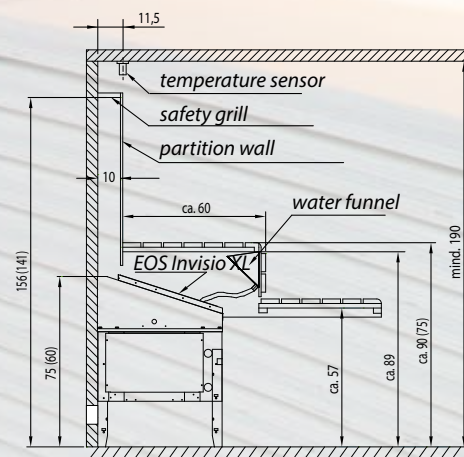
6,0

EOS Invisio Mini underbench heater

- :: Compact version for saunas up to 8 m³ size.
- :: Only 66 cm width, rock store fits approx. 15 kg stones.



Installation example EOS Invisio XL



:: FINNISH SAUNA HEATERS

EOS Invisio is a special range of the unique concealed „underbench“ sauna heaters.

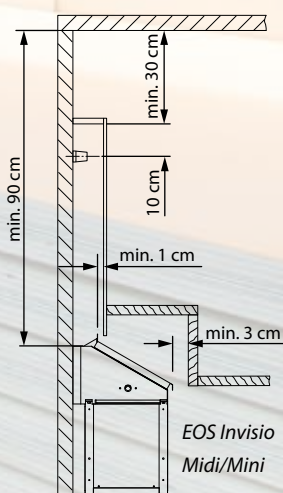
EOS Invisio sauna heaters are installed under the sauna benches with a partition wall with only a 10 cm gap to the main sauna wall.

Thanks to their construction and unique installation Invisio heaters offer high safety standards and save a lot of valuable space in the cabin. There is no more no risk of accidentally touching the heater and your sauna will look more spacious inside.

In spite of the hidden installation traditional water splashes are of course still possible. All Invisio heaters include a stainless steel water funnel with silicone tube. The special gutter inside the heater spreads the water over the entire heater width to ensure quick evaporation. All Invisio heaters also include pre-mounted cable and safety cover protection grill.

Model	Item no.	Size (H x W x D)	Power	
EOS Invisio XL	94.5522	800 x 1160 x 580 mm	9,0 kW	
	94.6390		12,0 kW	
EOS Invisio XL Anthracite	94.5816		9,0 kW	
	94.6391		12,0 kW	
EOS Invisio Midi	94.5786		650 x 1160 x 380 mm	6,0 kW
	94.5787			9,0 kW
	94.5788	12,0 kW		
EOS Invisio Midi Anthracite	94.5813	6,0 kW		
	94.5814	9,0 kW		
	94.5815	12,0 kW		
EOS Invisio Mini	94.5708	650 x 660 x 380 mm	6,0 kW	
	95.5709		9,0 kW	
	95.5710		12,0 kW	
EOS Invisio Mini Anthracite	94.5810		6,0 kW	
	94.5811		9,0 kW	
	94.5812		12,0 kW	

Installation example EOS Invisio Midi



:: FINNISH SAUNA HEATERS

CONCEALED INSTALLATION - PLACE-SAVING AND SAFE

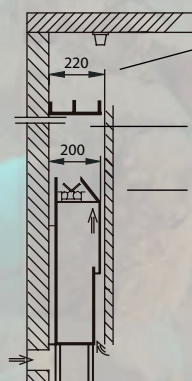
EOS 46.U sauna heaters provide two important advantages - they are installed behind a partition wall with only 22 cm gap to the sauna wall, which saves a lot of valuable space in a sauna room. This will allow more space for sauna benches and will make your sauna look more spacious. With only 20 cm depth EOS 46.U heaters belong to the slimmest models on the market today.

The concealed installation ensures at the same time increased safety in use - the heater cannot be accidentally touched while it is hot. A special safety grill mounted along the top edge of the partition wall effectively prevents objects from being dropped down on the heater. EOS 46.U heaters have been tested and approved for safety and compliance with the latest European norms.

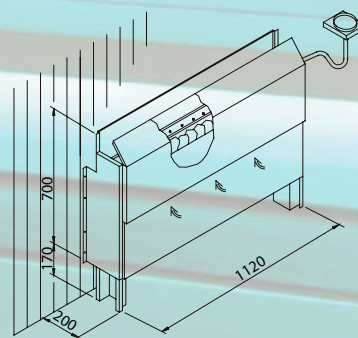
The traditional water splashes are of course possible. Every heater includes a water funnel with the connection hose. Thanks to the special gutter inside the heater the water is spread across its full width for a quick and effective evaporation. And despite their slim depth EOS 46.U heaters still feature an approx. 8 kg rock store.

Model	Item no.	Size (H x W x D)	Power
EOS 46.U	94.4887	870 x 1120 x 200 mm	6,0 kW
	94.4888		7,5 kW
	94.4889		9,0 kW
	90.8608		12,0 kW
EOS 46.U XL	94.7219	870 x 1440 x 200 mm	15,0 kW
	94.7220		18,0 kW
EOS 46.U Compact	94.6707	870 x 920 x 200 mm	6,0 kW
	94.4250		7,5 kW

Installation example for EOS 46.U sauna heaters



- With only 22 cm gap to the partition wall you save a lot of valuable space.
- The safety grill prevents objects from being accidentally dropped down on the stove.
- The heater is placed behind the partition wall. An accidental touching of the heater is not possible.
- It is still possible to make water splashes. The water is distributed along the full heater width for optimal evaporation. Water funnel is of course included.





6,0

7,5

9,0

12,0

EOS 46.U XL

EOS 46.U

15,0

18,0

EOS 46.U / 46. U XL

- :: Sauna heater for concealed installation behind a partition wall.
- :: Optimal for intensive commercial use.
- :: Only 20 cm depth - slim design saves valuable space in a sauna.
- :: Very robust and reliable, completely made of stainless steel.
- :: Integrated gutter for water distribution, stones above the heating elements.
- :: High safety in use, no risk of touching the heater.
- :: Includes accessories: cover protection safety grill (EOS 46.U - 1200 mm, EOS 46.U XL - 1600 mm.), water funnel with silicone hose, 6 m connection cable.
- :: Rock store with approx. 15 kg (46.U) / 20 kg (46.U XL) stone volume.



6,0

7,5

EOS 46.U Compact

- :: Compact-size version of the 46.U model.
- :: Only 920 mm width. Available with 7,5 kW power.
- :: Includes accessories: safety grill, water funnel with silicone hose, 6 m connection cable, sauna stones.
- :: Rock store with approx. 10 kg stone volume.

:: BI-O SAUNA HEATERS





SAUNA HEATERS WITH BUILT-IN VAPORIZER



3,0

EOS Bi-O Mini W wall-mounting

- :: Combi-heater for small domestic saunas, 230 V 1N power supply.
- :: Very compact, space-saving design.
- :: Built-in vaporizer allows to set a large variety of climate forms - from traditional hot & dry to mild and humid.
- :: Vaporizer output 0,75 kW. Integrated cup holder for essences.
- :: Available with polished stainless steel or anthracite finish outer shell.
- :: Rock store fits approx. 8 kg stones.



4,5

6,0

7,5

EOS Bi-O Filius W wall-mounting

- :: Versatile combi-heater for domestic saunas in extra-slim design.
- :: Only 24 cm depth, mounts directly to the sauna wall.
- :: Modern straight-lined design with anthracite finish outer shell.
- :: Vaporizer 1,5 kW, can be mounted on the left and on the right. With cup holder for essences. Manual water filling.
- :: Rock store fits approx. 8 kg stones.



:: BI-O SAUNA HEATERS

BI-O SAUNA HEATERS - SET THE CLIMATE AS YOU LIKE IT

Today a traditional hot Finnish sauna, tomorrow a mellow warm air both, and the next day an invigorating herbal steamy sauna bath: EOS Bi-O type sauna heaters with an integrated vaporizer allow to set the climate in your sauna just as you like it.

The vaporizer mounted right next to the heater section leaks the steam out next to the stones so that it is spread quickly in the entire cabin. An integrated bowl allows to place oils and sauna essences to make your sauna an aromatically exhilarating experience for the senses.

EOS Bi-O systems ensure optimal safety - sound alarm and automatic switch-off by water shortage are standard and the control units automatically adjust temperature and humidity.

Model	Item no.	Size (H x W x D)	Power
EOS Bi-O Mini W stainless steel	94.2444A	660 x 300 x 200 mm	3,0 kW
EOS Bi-O Mini W anthracite	94.6027		
EOS Bi-O Filius W	94.5144A	575 x 470 x 240 mm	4,5 kW
	94.5145A		6,0 kW
	94.5146		7,5 kW

:: BI-O SAUNA HEATERS

Model	Item no.	Size (H x W x D)	Power
EOS Bi-O Thermat W	94.5484	760 x 450 x 380 mm	6,0 kW
	94.5485		7,5 kW
	94.5486		9,0 kW
EOS Bi-O Tec W anthracite	94.2605A	600 x 450 x 380 mm	6,0 kW
	94.2606A		7,5 kW
	94.2607A		9,0 kW
EOS Bi-O Tec W chrome steel	94.2608A	600 x 450 x 380 mm	6,0 kW
	94.2609A		7,5 kW
	94.2610A		9,0 kW





6,0

7,5

9,0

EOS Bi-O Thermat W wall-mounting

- :: Affordable combi-heater for domestic sauna cabins.
- :: Die-cast aluminium top, anthracite pearl effect finish.
- :: Vaporizer 1,5 kW with 5 l tank, manual water filling.
- :: Rock store fits approx. 15 kg stones.



6,0

7,5

9,0

EOS Bi-O Tec W wall-mounting

- :: High quality combi-heater for domestic sauna cabins.
- :: Elegantly curved die-cast aluminium top cover.
- :: Stainless steel inner shell. Outer shell alternatively in anthracite finish or in polished chrome steel.
- :: Essences cup holder at the steam output.
- :: Vaporizer 2 kW with 5 l water tank, manual water filling.
- :: Optional accessories: herbs bowl, aroma tray (see page 49).
- :: Rock store fits approx. 15 kg stones.

6,0
7,5
9,0



EOS Bi-O Gracil floor-standing

- :: Versatile sauna heater with integrated vaporizer for flexible climate settings - from hot and dry to mild and humid.
- :: Vaporizer 1,5 kW on the right, with herbs bowl.
- :: Extra-slim design – only 25.5 cm depth.
- :: Thanks to the recessed terminal box EOS Bi-O Gracil S has a flat rear side and perfectly suits installations in front of glass panels.
- :: Elegant, straightlined design.
- :: Durable brushed stainless steel top cover.
- :: Outer shell: sheet steel, with high-quality, scratch resistant powder coating in black (“Black Line” series) or anthracite pearl effect finish.
- :: Optional rear wall cover panel in black or anthracite pearl effect finish.
- :: Optional wooden guard rail with direct mounting on the heater available.
- :: Dry-run protection with acoustic alarm. Manual filling. Water tank volume approx. 2 l.
- :: Full size 20 kg rock store despite very shallow construction.


6,0
7,5
9,0



EOS Bi-O Gracil W wall-mounting

- :: Versatile sauna heater with integrated vaporizer for flexible climate settings - from hot and dry to mild and humid.
- :: Vaporizer 1,5 kW on the right, with herbs bowl.
- :: Extra-slim design – only 27.5 cm depth.
- :: Wall mounting with only 3 cm gap to the wall.
- :: Wall-hanging model made of stainless steel, with integrated drip pan.
- :: Elegant, straightlined design.
- :: Durable brushed stainless steel top cover.
- :: Outer shell: sheet steel, with high-quality, scratch resistant powder coating in black (“Black Line” series) or anthracite pearl effect finish.
- :: Optional wooden guard rail with direct mounting on the heater available.
- :: Dry-run protection with acoustic alarm. Manual filling. Water tank volume approx. 2 l.
- :: Full size 20 kg rock store despite very shallow construction.

:: BI-O SAUNA HEATERS



Model	Item no.	Size (H x W x D)	Power
EOS Bi-O Gracil	94.6986A	760 x 560 x 250 mm	6,0 kW
	94.6987A		7,5 kW
	94.6988A		9,0 kW
EOS Bi-O Gracil black	94.7247	740 x 560 x 275 mm	7,5 kW
	94.7248		9,0 kW
EOS Bi-O Gracil W	94.7160A	740 x 560 x 275 mm	6,0 kW
	94.7161A		7,5 kW
	94.7162A		9,0 kW
EOS Bi-O Gracil W black	94.7327	740 x 560 x 275 mm	7,5 kW
	94.7328		9,0 kW



Model	Item no.	Size (HxWxD)	Power
EOS Bi-O Cubo	94.5922	950 x 400 x 395 mm	7,5 kW
	94.5923		9,0 kW
	94.5924		10,5 kW
	94.5925		12,0 kW
EOS Bi-O Cubo black	94.7276		9,0 kW
	94.7277		12,0 kW
EOS Bi-O Max	94.2317	900 x 500 x 500 mm	9,0 kW
	94.2318		12,0 kW
	94.3922		15,0 kW

:: BI-O SAUNA HEATERS

7,5
9,0
10,5
12,0



EOS Bi-O Cubo floor-standing

- :: Modern design floor-standing combi-heater for domestic and commercial sauna cabins.
- :: Contemporary straight-lined design with brushed stainless steel top and anthracite pearl effect outer shell finish.
- :: Recessed terminal box make EOS Bi-O Cubo ideal for installation in front of glass panels.
- :: Innovative construction - vaporizer placed under the heater, which ensures a very place-saving footprint 40 x 39,5 cm.
- :: Outer shell: sheet steel, with high-quality, scratchresistant powder coating in black ("Black Line" series) or anthracite pearl effect finish.
- :: 2 kW vaporizer with 7 l stainless steel water tank.
- :: Extra-large essence holder mounted in the rock store.
- :: Rock store fits approx. 25 kg stones.

9,0
12,0
15,0



EOS Bi-O Max floor-standing

- :: Premium-class floor-standing combi-heater for domestic and commercial saunas
- :: Optimal for an intensive commercial use.
- :: Timeless design, die-cast aluminium top and front cover, anthracite pearl effect finish outer shell.
- :: Proven construction - durable and highly reliable, completely made of high grade stainless steel.
- :: Extra-large 60 kg rock store for powerful water splashes and temperature stability.
- :: Service-friendly design - rock store above heating elements.
- :: Improved air convection thanks to the large side channels - very fast heat-up time and continuously high performance.
- :: 2 kW vaporizer with stainless steel water tank. Manual filling (automatic filling optionally possible).
- :: Optional accessories: large herbs bowl or aroma tray for mounting on the heater (see page 49).

7,5

9,0

12,0



EOS Bi-O Mat U behind-the-bench

- :: Combi-heater with integrated vaporizer for concealed behind-the-bench installation.
- :: For domestic and commercial saunas.
- :: Extra slim design - only 22 cm installation depth.
- :: Robust, durable construction, all made of high grade stainless steel.
- :: Vaporizer 1,5 kW (12 kW version - 2 kW).
- :: With 5 l water tank, manual filling (automatic refilling optionally possible).
- :: Dry run protection and acoustic water shortage alarm.
- :: Includes accessories: dust collecting bottom tray, integrated full-width infusion gutter, cover protection safety grill, water funnel with 1 m silicone hose, pre-mounted 6 m silicone connection cable 5 x 1.5 mm².
- :: Rock store fits approx. 15 kg stones.

2,0

3,0



EOS Bi-O Invisio Vaporizer

- :: External vaporizer for all EOS Invisio sauna heaters - turns every Invisio sauna heater into a "Bi-O" version for a flexible sauna climate from hot and dry to mild and humid.
- :: Can be mounted on the left / right side. Can be also retrofitted at a later time.
- :: Available with 2,0 kW and 3,0 kW power output.
- :: Includes stainless steel steam pipe with the steam outlet with integrated herbs holder and flexible joint.
- :: Water tank made of high-grade stainless steel, fits approx. 12 l water.
- :: Manual water filling. Automatic water filling possible with the optional FWA01 top-up device.
- :: Dry run protection. Made of stainless steel.
- :: Double drain nozzle facilitates simultaneous connection of the top-up device and water drain tap.

*Installation example on EOS Invisio XL heater.
Heater does not belong to delivery scope.*

:: BI-O SAUNA HEATERS



Model	Item no.	Size (H x W x D)	Power
EOS Bi-O Mat U	94.4891	1000 x 1120 x 200 mm	7,5 kW
	94.4892		9,0 kW
	94.1127		12,0 kW
EOS Bi-O Inviso Vaporizer	94.6293	530 x 200 x 360 mm (without steam pipe)	2,0 kW
	94.6294		3,0 kW

:: ACCESSORIES AND UPGRADES

Model	Item no.
Aroma tray with mounting bracket	94.4884
Herbs bowl with mounting bracket	94.4885
Herbs bowl with "wave" mounting	94.4221





Aroma tray

- :: Tray with a large evaporating surface.
- :: Made of high grade sand-blown stainless steel
- :: Includes mounting bracket.
- :: Quick and simple installation.
- :: For sauna heaters: EOS ThermoTec S/W, EOS Bi-O Tec, EOS EuroMax, EOS Bi-O Max, Germanius.



Herbs bowl

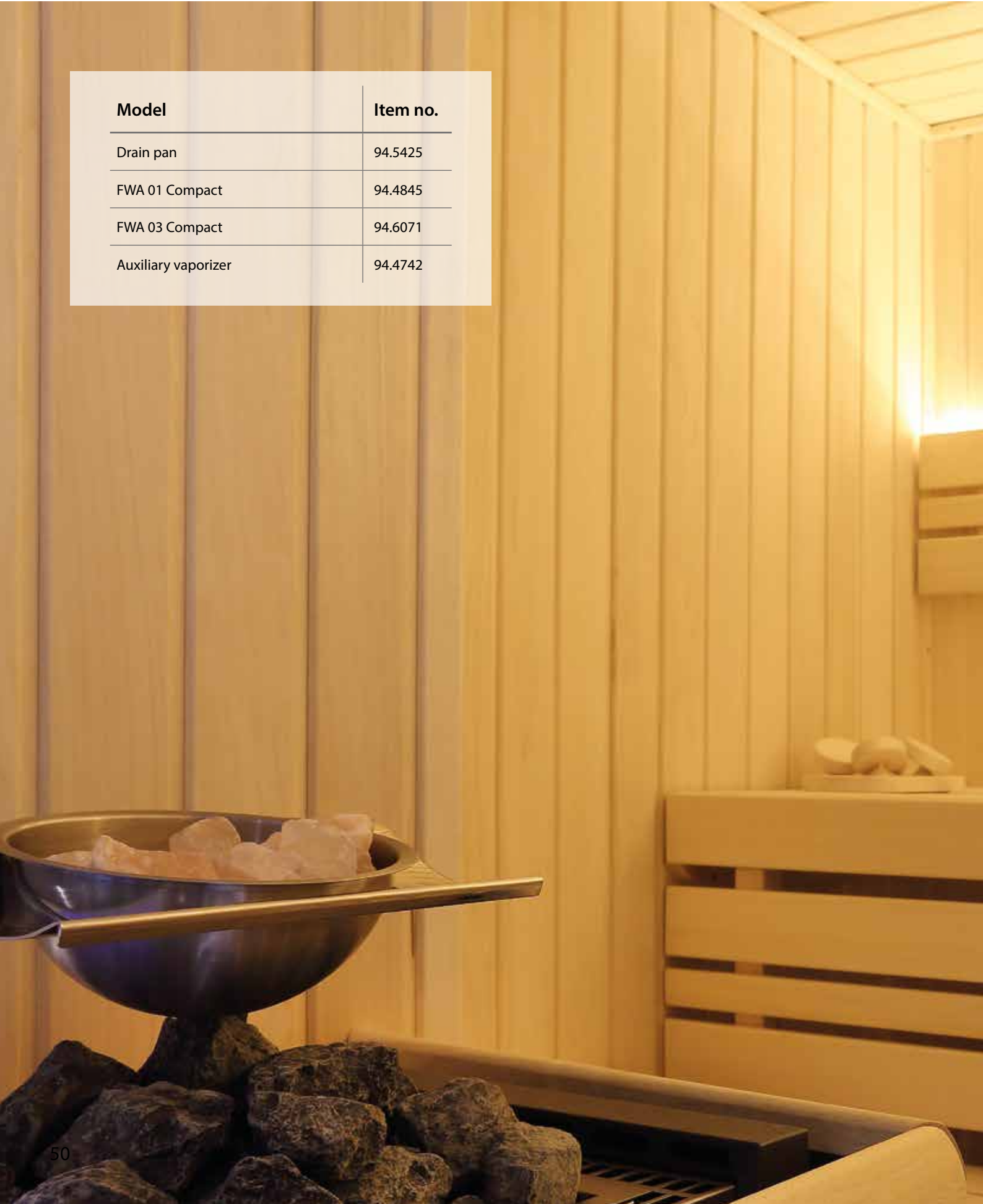
- :: Large bowl, ideal for herbs, essences and oils, or salt crystals
- :: Made of high grade stainless steel, approx. 0,6 l volume.
- :: Includes mounting bracket.
- :: Quick and simple installation.
- :: For sauna heaters: EOS ThermoTec S/W, EOS Bi-O Tec, EOS EuroMax, EOS Bi-O Max
- :: Also available as a „Multicup“ version for wall mounting. With or without herbs strainer.



Herbs bowl “wave”

- :: Herbs bowl with an elegantly curved, wave-alike mounting bracket.
- :: Ideal for herbs, sauna essences, oil or salt crystals.
- :: Made of high grade stainless steel.
- :: For sauna heaters: EOS Germanius and EOS Bi-O Germanius, EOS Cubo, EOS Cubo+, EOS Cubo Avantgarde black and EOS Bi-O Cubo as well as for EOS EuroMax, EOS Bi-O Max, EOS Bi-O Tec, EOS ThermoTec W and S.

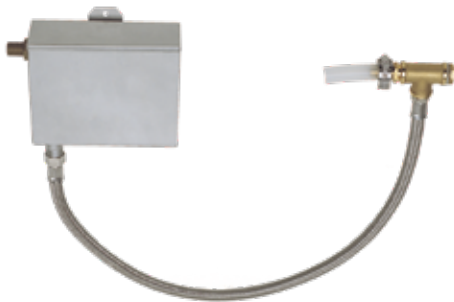
Model	Item no.
Drain pan	94.5425
FWA 01 Compact	94.4845
FWA 03 Compact	94.6071
Auxiliary vaporizer	94.4742



:: ACCESSORIES AND UPGRADES

Drain pan

- :: Made of robust plastic, with integrated handle.
- :: For EOS Bi-O type heaters with vaporizer.
- :: To collect drain water from the vaporizer.
- :: Particularly helpful by heaters with the small gap between water drain tap and floor surface.



FWA 01 / FWA 03 Compact top-up device

- :: For automatic refilling of EOS Bi-O heater vaporizers from a permanently connected water supply.
- :: Particularly recommended by commercial use.
- :: Mounts either on the sauna heater or on the adjacent sauna wall.
- :: Includes metal braided flex hose with 1/2" connection.
- :: Mechanical action, no power supply needed.
- :: Stainless steel water tank.

Auxiliary vaporizer

- :: Slim, place-saving design. Essence holder at the steam exit. Wall-mounting.
- :: Powerful steam source - 2 kW power, 5 l water tank.
- :: May be retrofitted into existing sauna cabins. Stainless steel housing.
- :: Manual water filling through the steam opening.
- :: Dry run protection with sound alarm at water shortage.
- :: Single phase power supply 230 V 1N AC.



:: WATERMILL SAUNA





EVENT HEATER FOR THEMED SAUNAS

:: WATERMILL SAUNA

EOS WATERMILL SAUNA

The EOS Watermill sauna brings “action” and a unique water splash experience in every sauna room. The spectacular Watermill wheel is perfectly completed with an impressive 34.G sauna heater or a EOS Goliath sauna heater.

The Watermill wheel rotates slowly counter-clockwise which already makes it an attraction in the sauna room.

After an automatic signal it starts to rotate in the other direction, so that the scoops take some water from the basin under the wheel and pour it directly into the cascade mounted over the heater, causing powerful and spectacular steam shock effects.

A very large stone volume of the sauna heater ensures at the same time high energy reserves and water evaporation capability.

Design hint: in combination with our coloured light or sound effects the water splashes may be turned into a spectacular ceremony and a unique experience for all sauna guests.

Model	Item no.	Size (H x W x D)	Power
EOS Watermill sauna set with 34.GM heater	94.3076	950 x 750 x 530 mm	18,0 kW
	94.3092		27,0 kW
	94.5149	950 x 1000 x 530 mm	30,0 kW
	94.3093		36,0 kW
EOS Watermill sauna set with Goliath heater	94.6223	825 x 960 x 470 mm	18,0 kW
	94.6224		24,0 kW
	94.6225		30,0 kW
	94.6226		36,0 kW
Watermill wheel	94.3077		



18,0

27,0

30,0

36,0

EOS Watermill sauna + 34.GM or Goliath heater

- :: High end sauna heater set for luxury class themed saunas, recommended for saunas from 25 m³ size.
- :: With a continuously rotating mill wheel and spectacular water splashes at pre-set intervals.
- :: Mill wheel includes pre-mounted drive and control box.
- :: Adjustable intervals, e.g. every 30 minutes.
- :: Automatic water refilling thanks to the built-in top-up device (requires permanent water supply).
- :: 34.GM sauna heater with front panel of massive granite stone. All made of stainless steel, 30 - 45 kg stones, or
- :: EOS Goliath sauna heater, anthracite finish, 75 kg sauna stones.



EOS Watermill sauna set with a Goliath heater

:: SAUNA CONTROL UNITS





INNOVATIVE. FUNCTIONAL. RELIABLE.

:: SAUNA CONTROL UNITS



EOS Econ D1

- :: Electronic control unit for dry (Finnish) sauna.
- :: Affordable entry-class model with all essential control functions.
- :: Modern, slim-design housing, only 60 mm depth.
- :: Illuminated high-contrast LCD display with 12 languages menu navigation.
- :: Temperature control range 40 °C - 115 °C.
- :: Heating time up to 6 hours.
- :: Switching for cabin light, keypad lock, „Life-Guard“ function.
- :: For sauna heaters up to 9 kW (switching capacity 9 kW, **not extendable**).



EOS Econ H1

- :: Electronic control unit as Econ D1, but for dry and humid operation.
- :: Temperature control range:
 - in dry (Finnish) sauna mode: 40 °C - 115 °C
 - in humid sauna mode: 30 °C - 70 °C.
- :: Humidity control - proportional to time, adjustable in 10 steps.
- :: With water shortage alarm, sauna dry function (after-heating and extractor fan operation to dry sauna room after humid mode).
- :: For Bi-O sauna heaters up to 9 kW (switching capacity 9 kW, **not extendable**)

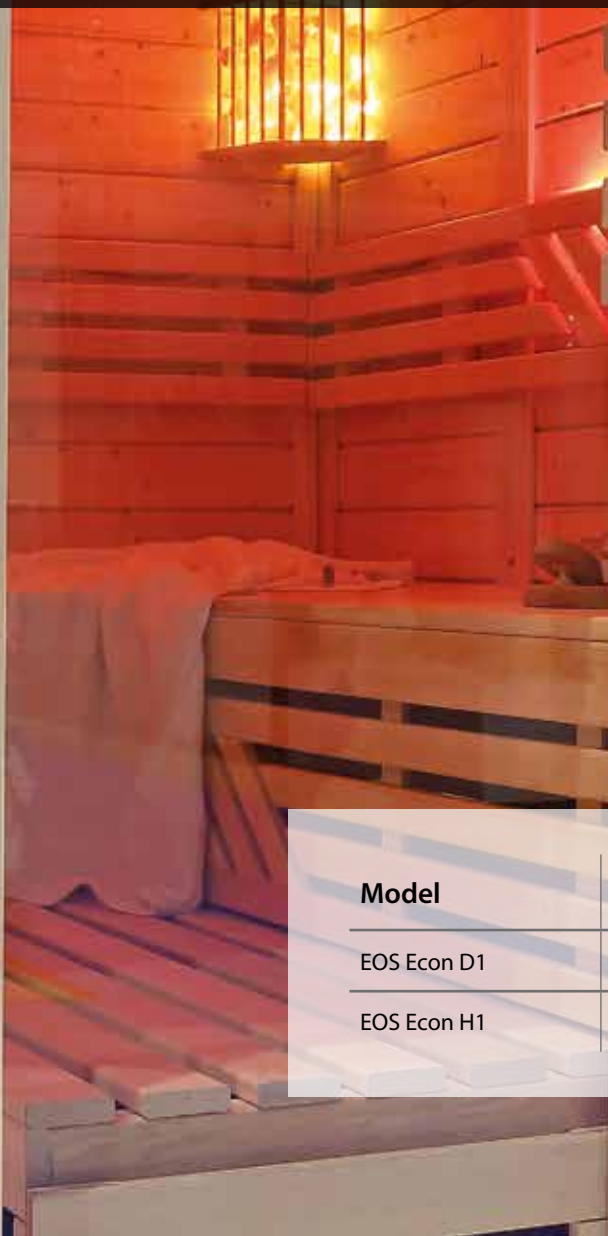


EOS Econ is a versatile series of modern sauna control units featuring a large scope of functions and a contemporary, slim-shape design.

The control units EOS Econ are available in a variety of different versions, from very affordable entry-class models to advanced versions with a large scope of special functions such as remote switching or limited access mode. All Econ control units feature a modern high-contrast LCD matrix display with a comfortable menu navigation in 12 languages which makes their operation easy and convenient. They can be mounted directly on the wall surface or installed partially recessed in order to make them look even slimmer.

Thanks to the modern electronic relays EOS Econ models have very low noise operation. Every unit includes temperature sensor with cable.

EOS Econ models have proven to be exceptionally reliable both in domestic and commercial operation. They are compliant with the latest safety norms in Europe and have been independently tested and approved for quality and safety.

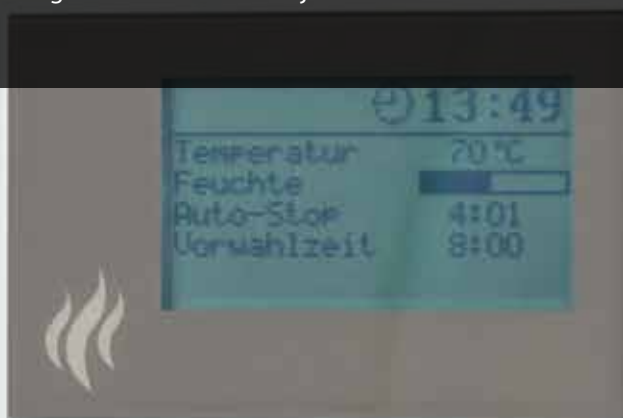


Model	Item no.	Size (H x W x D)
EOS Econ D1	94.6136	220 x 250 x 60 mm
EOS Econ H1	94.6137	

EOS Econ D2 and EOS Econ H2 belong to the most popular models of the entire EOS Econ range thanks to the optimal scope of functions, easy operation and particularly good price to value ratio.

All functions and parameters are shown at once on a large illuminated multi-line LCD. While adjusting one parameter all others always remain in sight. Menu navigation in 12 languages make the operation particularly comfortable and easy. In the case of a power loss all settings will remain saved for at least 24 hours.

The keypad lock function allows EOS Econ D2/H2 models to be reliably protected against an unauthorized access. The desired temperature and heating time can be set or adjusted within a few seconds.



MODE

EOS

Model	Item no.	Size (H x W x D)
EOS Econ D2	94.6138	220 x 250 x 60 mm
EOS Econ H2	94.6139	

:: SAUNA CONTROL UNIT



EOS Econ D2

- :: Electronic control unit for dry (Finnish) sauna
- :: Suitable for commercial operation.
- :: Extra-large multi-line LCD display, shows all parameters at a glance. Menu navigation in 12 languages.
- :: 24 h pre-set timer in real time, clock, screen-saver function.
- :: Switch for cabin light, „Life Guard“ function.
- :: Heating time limitation 6 h, extendable to 12 h.
- :: Switching capacity 9 kW, may be extended with an LSG device.



EOS Econ H2

- :: As EOS Econ D2 but for dry and humid sauna operation.
- :: Digital temperature control:
 - 40 °C - 115 °C (in dry Finnish sauna mode)
 - 30 °C - 70 °C (in humid sauna operation).
- :: Humidity control - proportional to time, adjustable in 10 steps.
- :: Suitable for commercial use.
- :: 24 h pre-set timer in real time, clock, screen-saver function.
- :: Heating time limitation 6 h, extendable to 12 h.
- :: Switching capacity 9 kW, may be extended with an LSG device.

:: SAUNA CONTROL UNITS



EOS Econ D3

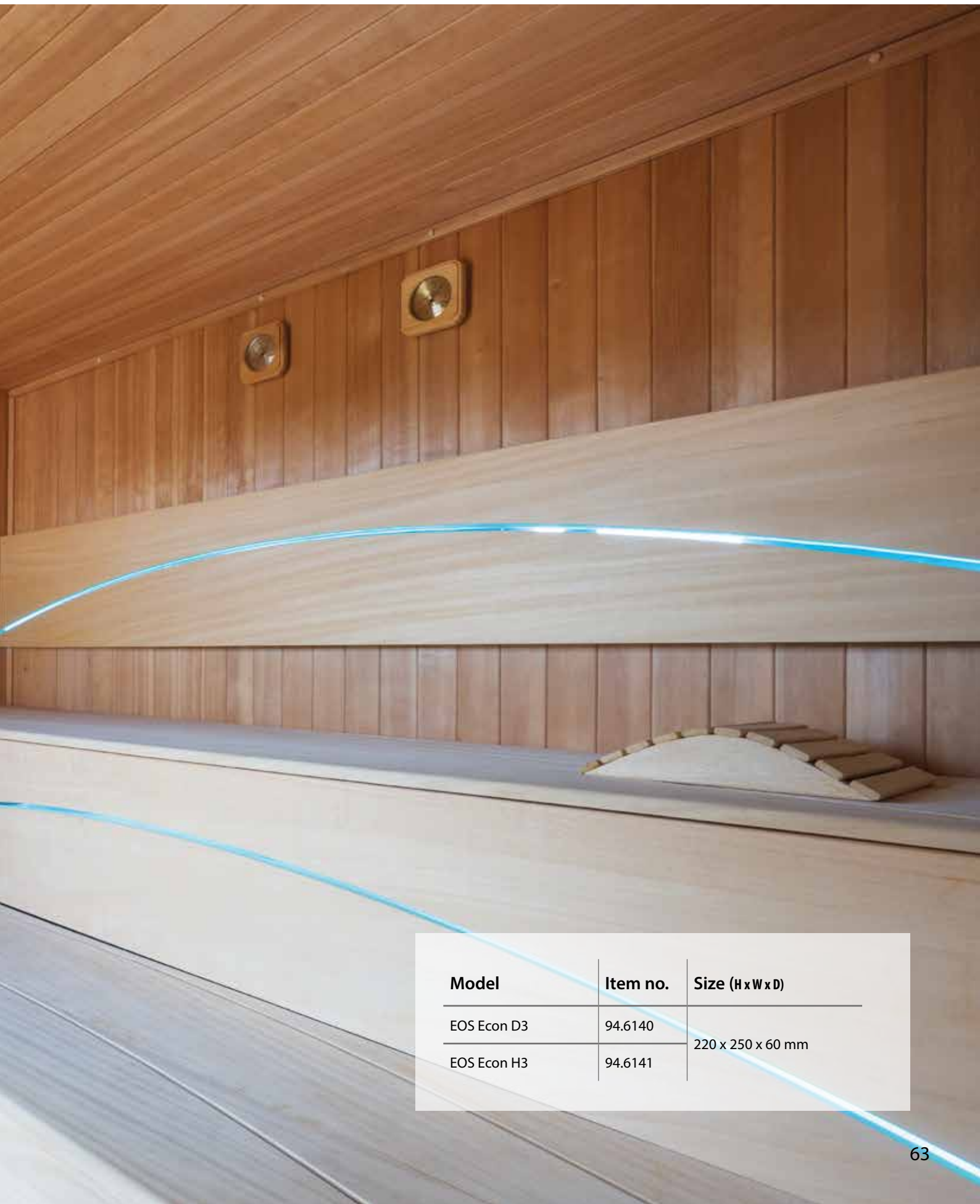
- :: Electronic control unit for dry (Finnish) sauna.
- :: Optimal for commercial operation.
- :: Extra-large multi-line LCD display, shows all parameters at a glance. Menu navigation in 12 languages.
- :: 24 h pre-set timer in real time, clock, screen-saver function.
- :: Switch for cabin light, „Life Guard“ function.
- :: Heating time limitation 6 h, 12 h or unlimited.
- :: Supports an optional 2nd temperature sensor (bench sensor).
- :: Switching capacity 9 kW, may be extended with an LSG device.



EOS Econ H3

- :: As the EOS Econ D3 but for dry and humid sauna operation. Optimal for commercial operation.
- :: Digital temperature control:
 - 40 °C - 115 °C (in dry Finnish sauna mode)
 - 30 °C - 70 °C (in humid sauna operation).
- :: Humidity control - proportional to time (10 steps) or as per relative air humidity in % with an optional humidity sensor.
- :: Sauna-dry mode (after-heating and extractor fan operation to dry sauna after humid mode).
- :: Switching capacity 9 kW, may be extended with an LSG device.





Model	Item no.	Size (H x W x D)
EOS Econ D3	94.6140	220 x 250 x 60 mm
EOS Econ H3	94.6141	

EOS ECON D4 / H4 - FOR DEMANDING USERS:

EOS Econ D4 and H4 models are ideal for domestic and commercial users who need a sauna control unit combining advanced features and modern design with a particularly good price to value ratio.

These models feature for instance a dimmable cabin light output with an automatic detection of inductive and capacitive loads. With an optional remote start module the sauna can be switched on or off from a remote location at a large distance. And the innovative „holiday home mode“ allows to restrict the access to the essential functions only which is particularly helpful by e.g. rented saunas or in a commercial environment.

OPTIONS:

- :: Remote Start Module: with this module you can start your sauna from a remote location up to 100 m. An integrated LED lamp indicates the current operation status.
- :: Bench Sensor: improves temperature control, recommended especially for large saunas or complex layouts. Compatible with EOS Econ D3/H3 and D4/H4 models.
- :: F2 Humidity sensor: for humidity control as per relative air humidity in a sauna. Compatible with EOS Econ H3 and H4.

Model	Item no.	Size (H x W x D)
EOS Econ D4	94.5842	220 x 250 x 60 mm
EOS Econ H4	94.5843	

:: SAUNA CONTROL UNITS



EOS Econ D4

All functions like EOS Econ D3, but additionally with:

- :: Remote switching possible (optional remote start button).
- :: Dimmable cabin light output, 10-step adjustment.
- :: Automatic detection of inductive and capacitive loads on light output (manual setting possible).
- :: Output for fan, adjustable speed (3 steps).
- :: Innovative „Holiday home mode“ - restricts the access to basic functions only (on/off, temperature, light).
- :: Switching capacity 9 kW, may be extended with an LSG device.



EOS Econ H4

As the EOS Econ H3 model, but additionally with:

- :: Remote switching possible (optional remote start button).
- :: Dimmable cabin light (10-step, automatic detection of inductive and capacitive loads).
- :: Output for fan, 3 step speed adjustment.
- :: „Holiday home mode“ (restricted access mode).
- :: Switching capacity 9 kW, may be extended with an LSG device.

:: SAUNA CONTROL UNITS



EOS EmoTec D

- :: Premium class electronic control unit for very demanding domestic and commercial saunas. For dry Finnish sauna operation.
- :: With a separate slim-size display panel (can be installed up to 100 m away from the sauna). Surface or recessed mounting possible (housing included).
- :: Display panel available in anthracite, black or white design.
- :: TFT colour display with menu navigation in 18 languages.
- :: Innovative operation with jog-dial switch - simple, easy, intuitive.
- :: Very large scope of functions, e.g. week timer with climate management, light dimming, holiday home mode, service level, guided setup and much more.
- :: Additional options with external modules (e.g. remote control, colour light, etc.)



EOS EmoTec H

- :: Like EOS EmoTec D, but with humidity control - for all EOS Bi-O type sauna heaters.
- :: Humidity control - proportional to time (10 steps) or as per relative air humidity in % with an optional humidity sensor.
- :: Numerous comfort functions such as sauna-dry mode, adjustable after-heating temperature, fan runtime, after-heating time, smart-heat function in humid mode and much more.
- :: Guided setup, pin-code protected service level, additional innovative smart features (software updates, custom firmware, etc.).



OPTIONAL MODULES:

- :: Web App Modul: allows remote sauna control from a smart phone / tablet via internet using a free EOS Sauna Control app.
- :: Coloured light module: control of almost any LED system directly from the sauna control unit.
- :: Sound module: music in your sauna. With stereo amplifier and operation directly from the sauna control unit. Music files can be streamed via Bluetooth, USB, SD card or an analogue input.

For more details please refer to page 83.

Model	Item no.	Size (HxWxD)
EOS EmoTec D anthracite/silver	94.5559	Display panel: 127 x 130 x 25 mm Relay box: 270 x 300 x 100 mm
EOS EmoTec D white/silver	94.6053	
EOS EmoTec D anthracite/black	94.7256	
EOS EmoTec H anthracite/silver	94.5560	
EOS EmoTec H white/silver	94.6054	
EOS EmoTec H anthracite/black	94.7257	



EOS EmoStyle D

- :: Premium class electronic sauna control unit for demanding design-oriented domestic and commercial use.
- :: Exclusive display panel with glass front design. Recessed or surface mounting, up to 100 m remote installation.
- :: Display panel available in white or black design.
- :: TFT colour display with multi-language navigation, 18 languages.
- :: Quick and simple operation thanks to capacitive buttons.
- :: Very large scope of functions, incl. guided setup, pin code protected service level, week timer and many other special functions.
- :: Additional functions can be added via optional extension modules (remote control, coloured light, sound).

EOS EmoStyle H

- :: Like EOS EmoStyle D, but additionally with humid sauna operation control - suitable for all EOS Bi-O type sauna heaters.
- :: Humidity control - proportional to time (for constant steam production) or as per relative air humidity with an optional humidity sensor (exact rel. air humidity control in %).
- :: Large scope of additional functions - sauna-dry mode with adjustable temperature and fan operation, smart-heat in humid mode and much more.
- :: Guided setup menu, pin code protected service level for extended settings and fine tuning, special innovative functions.
- :: Supports additional bench sensor and humidity sensor.

Model	Item no.	Dimensions (H x W x D)
EOS EmoStyle D white	94.6316	Display panel: 127 x 130 x 25 mm
EOS EmoStyle D black	94.6314	
EOS EmoStyle H white	94.6315	Relay box: 270 x 300 x 100 mm
EOS EmoStyle H black	94.6319	

:: SAUNA CONTROL UNITS



white / black walnut



black / white acer

EOS EmoStyle Hi

- :: Luxury class electronic sauna control unit.
- :: As the EOS EmoStyle H model but with display panel suitable for installation inside sauna rooms.
- :: For all EOS Bi-O type sauna heaters.
- :: Features a special design display panel with glass front, colour TFT display and a stylish wooden inlay cut of acer or walnut with capacitive buttons.
- :: For display panel installation inside sauna rooms.
- :: All functions as the EOS EmoStyle D and H models.
- :: Display panel available in four designs:
 - :: White glass with acer inlay
 - :: White glass with walnut inlay
 - :: Black glass with acer inlay
 - :: Black glass with walnut inlay

**For installation inside
sauna rooms!**

Model	Item no.	Dimensions (H x W x D)
EOS EmoStyle Hi white acer	94.6317	Display panel: 200 x 140 mm
EOS EmoStyle Hi black acer	94.6241	
EOS EmoStyle Hi white walnut	94.6415	Relay box: 270 x 300 x 100 mm
EOS EmoStyle Hi black walnut	94.6414	

EOS EmoTouch 3

New generation touchscreen control system for the highest demands - with fully redesigned graphic user interface and numerous new functions. EOS EmoTouch 3 - complex things have never been so simple to use!

- :: Digital control system for sauna, steam room and hammam. Ideal for both domestic and commercial use.
- :: Completely new design - exclusive rimless glass front display with a 7" capacitive colour touch screen display panel.
- :: Fully redesigned graphic user interface - now with the choice of various cabin designs (themes).
- :: Fully redesigned menu navigation and operation - makes operation faster, easier and more intuitive.
- :: Can control up to 8 separate cabins from one display panel (saunas, steam rooms and hammams).
- :: Smart menu navigation with 20 languages.
- :: Pin code protected service level for extended settings and fine tuning - allows to adjust the control to suit individual needs.
- :: Innovative guided setup and numerous smart control functions to make control simple, quick and easy as never before.
- :: Mass storage and SD card connection - allows firmware updates.
- :: Additional functions can be added with various optional extension modules (coloured light, sound, remote control, etc.)
- :: Digital temperature sensor with 5 m cable included. Supports additional sensors (e.g. sauna bench sensor, humidity sensor, floor sensor, wall sensor and others).



One control unit for:

- Dry (Finnish) sauna
- Humid (Bi-O) sauna
- Steam room
- Hammam
- Infrared cabin

Control for up to 8 cabins with only one display panel!



Control for steam rooms and hammams

EOS EmoTouch 3 in combination with the SteamRock II Premium steam generator delivers a high performance package with many unique features.

- :: Graphic user interface designed for steam rooms and hammams.
- :: Numerous control functions and settings optimized for steam rooms.
- :: Innovative tools for performance and operation optimization and tuning with regards to the individual cabin situation.
- :: Specially designed for operation with the SteamRock steam generator.
- :: Integrated control for all features - essence dosing control (2 fragrances), volt-free output, chemical cleaning system, optional sensors and outputs for floor, bench and wall temperature control.

:: CONTROL FOR SAUNA & STEAM

DIGITAL BRAIN FOR YOUR WELLNESS FACILITY

The control unit EOS EmoTouch 3 allows to control up to 8 separate cabins - saunas, steam rooms and hammams from one display panel.

With only one display panel you are in command - in a second you can select every connected cabin and control it individually or choose the overview of all cabins to check their status and control them all at once.

With only one touch you can start and stop all your cabins or choose a separate cabin for individual setting. For every cabin you can make all settings individually as if you had 8 separate control systems.

EOS EmoTouch 3 - probably the most advanced control system in the world. Designed for you to make complex things easy to use.

Do not hesitate to ask what EOS EmoTouch 3 can do for your wellness needs!



Modell	Art.-Nr.	Maße (H x B x T)
EOS EmoTouch 3 white (Sauna)	94.6505	Display panel: 142 x 210 x 42 mm
EOS EmoTouch 3 black (Sauna)	94.6504	
EOS EmoTouch 3 white (Hammam)	94.6992	Relay block: 270 x 300 x 100 mm
EOS EmoTouch 3 black (Hammam)	94.6991	

::: EXTENSION MODULES

EOS EMOTOUCH

Luxury class control system for highest demands. EOS EmoTouch 3 stands out thanks to the unique operation principle via an innovative visual graphic interface and a large capacitive touch screen display. Sauna control has never been so easy and the scope of functions and features leaves hardly any wish unfulfilled.



Model	Item no.	Size (HxWxD)
LSG Sauna for EOS EmoTouch 3	94.6640	270 x 300 x 100 mm
LSG Hammam for EOS EmoTouch 3	94.6672	
LSG-Infrarot for EOS EmoTouch 3	94.6965	
LSG Steam for EOS EmoTouch 3	94.6967	

LSG Sauna for EOS EmoTouch 3

- :: Extension module for EOS EmoTouch 3. Allows to connect an additional sauna cabin and control it from the existing EmoTouch 3 display panel.
- :: Up to 8 separate saunas (and/or steam rooms) may be connected to one display panel.
- :: Includes digital temperature sensor with 5 m cable.
- :: Includes 10 m sauna bus connection cable.
- :: Supports dry and humid sauna operation. 9 kW switching capacity. Up to 3 kW vaporizer output.



LSG Hammam for EOS EmoTouch 3

- :: Extension module for EOS EmoTouch 3. Allows to control a hammam as an additional cabin from the existing EOS EmoTouch 3 display panel
- :: Up to 8 separate cabins (sauna, steam room, hammam) may be connected to one EmoTouch 3 display panel.
- :: Includes 3 digital temperature sensor with 5 m cable for floor, bench and wall temperature control. Temperature control range
- :: Three separate 3 kW outputs for floor, bench and wall heating. Includes 10 m sauna bus connection cable.

LSG Infrared for EOS EmoTouch 3

- :: Extension module for EOS EmoTouch 3. Allows to control a separate infrared cabin with the existing EOS EmoTouch 3 display panel.
- :: 3 outputs (2 x dimmable, 1 x switchable) - can be controlled individually or bundled in groups. Temperature control as per air temperature or by feeling through zone dimming. Up to 3500 W switching capacity.
- :: Delivery includes 10 m sauna bus connection cable, digital temperature sensor with 5 m cable, 230 V power adaptor (requires 2 power supplies).
- :: Hint: Also available as a complete control unit with EOS EmoTec-/ EOS Emo-Style-series display panels.



LSG Steam for EOS EmoTouch 3

- :: LSG Steam extension module for EOS EmoTouch 3 allows to operate the steam generators of many other brands. Compatibility must be checked in advance.
- :: Suitable for EOS SteamRock II Basic and EOS SteamAttrac models.
- :: Attention: not suitable für SteamRock II Premium.
- :: Output - switching signal only.
- :: Includes 10 m sauna bus connection cable and a digital temperature sensor with 5 m cable.

:: EXTENSION MODULES

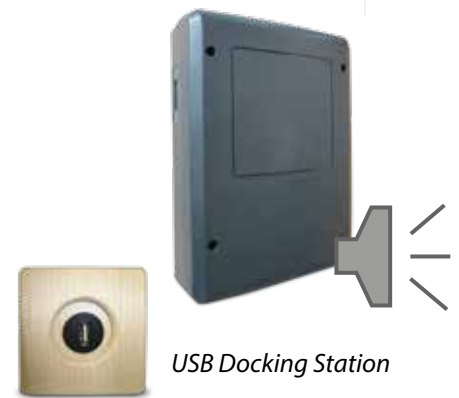


SBM-FL75/150 Coloured light module

- :: Allows to connect and control almost any RGB or white light LED light (e.g. LED-spots, LED-strips, etc.). No driver needed, direct connection to the module.
- :: Compatible with voltage-controlled (0 - 24 V) and with current-controlled (0 - 3000 mA) LED lamps.
- :: Suitable for LED strips with common „-“ only.
- :: Output: RGB (3 separately adjustable channels) and white light (may be synchronized with the main light). In EmoTec design housing.
- :: Available with two power outputs: 75 W and 150 W.
- :: Compatible control units: EOS EmoTec-/EmoStyle-/ EmoTouch 3-series.

SBM-S / SBM-BT Sound module

- :: The sound module allows to playback music in your sauna and to control it directly at the sauna control unit display.
- :: The module features an integrated stereo amplifier 2 x 15 W and an integrated MP3 player. Music files can be retrieved from an SD-card, USB connection or via Bluetooth. A NF 3,5 mm analogue music jack is also available for music streaming.
- :: Compatible control units: EOS EmoTec-/EmoStyle-/ EmoTouch 3-series.



SBM-IR module

- :: SBM-IR Module allows to control infrared radiators and heating foils in your sauna. 3 operation modes are possible: only sauna, only infrared or sauna & infrared at once.
- :: Temperature control range 30 - 70° C. Heating control as per air temperature or as per heating intensity.
- :: Compatible with all type of IR emitters like regular and quartz glass IR radiators, IR heating foils and panels.
- :: Up to 3 IR modules can be connected to one sauna control unit - up to 10.5 kW total power possible.
- :: Can be used as an extension to IR control unit EOS EmoTec IR and EOS InfraStyle-series .



SBM - HOT / ECO

- :: Push button and module for HOT / ECO function for sauna.
- :: HOT is a power boost function (up to 30 minutes).
- :: ECO is a power-saving mode with manual or automatic operation.
- :: Durable metal housing, flush-mounting installation. With illumination ring in red / green.
- :: Set includes: push button with external electronic unit and pre-mounted connection cables.
- :: Suitable for sauna control units: EOS EmoTec-/EmoStyle-/ EmoTouch 3-series.



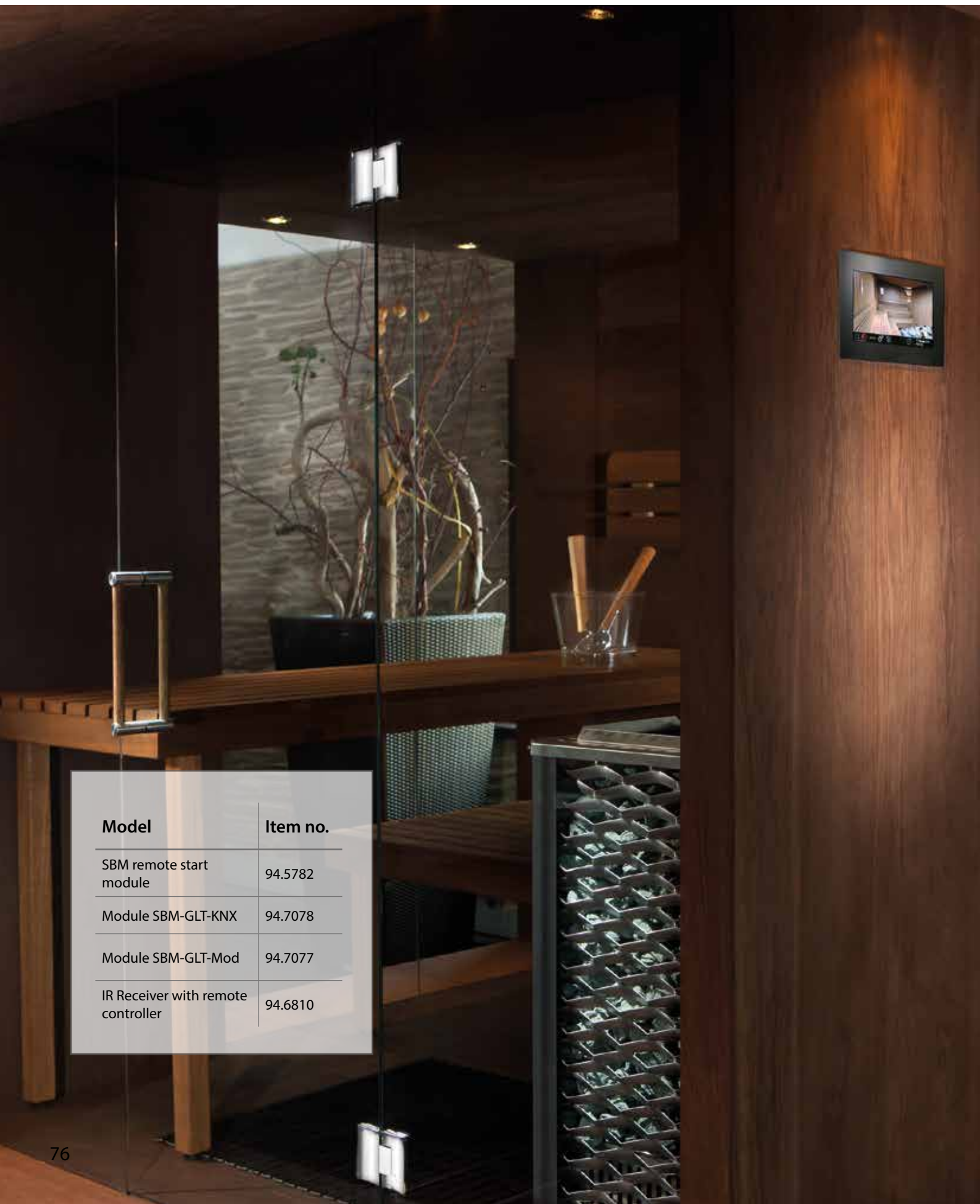
SMART CONTROL

Perfect relaxation is no coincidence, but the result of optimal interaction of all necessary components. EOS combines smart features and the cutting-edge technology with simplicity and comfort in use, setting the quality benchmark both in the private and in the commercial sector.

Every connected cabin can be easily enhanced with additional control features - for example you can also control music or LED coloured lighting.

Model	Item no.	Site (H x W x D)
SBM-FL75 module coloured light, 75 W	94.5996	270 x 195 x 100 mm
SBM-FL150 module coloured light, 150 W	94.6007	270 x 300 x 100 mm
SBM-S sound module	94.5920	270 x 195 x 100 mm
SBM-S BT sound module with Bluetooth	94.5921	270 x 195 x 100 mm
SBM-IR module	94.6966	270 x 300 x 100 mm
SBM-HOT	94.6800	
SBM-ECO	94.6980	

:: EXTENSION MODULES



Model	Item no.
SBM remote start module	94.5782
Module SBM-GLT-KNX	94.7078
Module SBM-GLT-Mod	94.7077
IR Receiver with remote controller	94.6810

Remote start module

- :: Allows to start / stop sauna remotely from up to 100 m distance.
- :: Integrated LED shows the current operation status (stand-by, heating, error).
- :: Recessed installation. Connection with a 6P6C RJ12 cable (sauna bus).
- :: Elegant wooden cover panel of massive walnut wood.
- :: Suitable for EOS Econ D4/H4, EOS EmoTec-/EmoStyle-/ EmoTouch 3-series.



KNX- / Modbus Module



- :: The KNX- / Modbus module allows to integrate your sauna cabin into the central BMS system using the KNX or Modbus communication protocols.
- :: Suitable for EOS EmoTec-/EmoStyle-/ EmoTouch 3-series.
- :: Allows remote control for: sauna heater (also with vaporizer), temperature and humidity, light with dimming, volt-free output switching, monitoring of temperature and humidity, sauna status etc.
- :: Very simple to install. Connection to sauna control unit via sauna bus connector.

IR Receiver with remote controller

- :: Infrared receiver with a wireless remote control for SBM-FL coloured light modules and SBM-S sound modules.
- :: Allows to quickly and conveniently control coloured light and/ or music from inside a sauna room (infrared cabin). Control of the coloured light and sound over the control panel remains as before possible.
- :: Set includes: wireless remote control (with battery), 5 m connection cable to the control unit, infrared receiver (black housing) for installation inside sauna (infrared cabin).



:: POWER EXTENSION



EmoTec LSG 09 R relay box

- :: Relay box with 9 kW switching capacity for power extension.
- :: Compact wall-mounting housing, connections on the rear side.
- :: In combination with 9 kW capable control units suitable for sauna heaters up to 18 kW power.
- :: Very low noise operation thanks to the modern electronic relays.



LSG 18 / 18 H contactor box

- :: Contactor box for power extension.
- :: In combination with 9 kW capable control units suitable for sauna heaters up to 27 kW power.
- :: LSG 18 model: 18 kW power output.
- :: LSG 18 H: power output 18 kW + additionally 4 kW, optimal for Bi-O type sauna heaters.
- :: Cable connections from the rear or bottom side possible.
- :: Integrated fuse box (for Neozed D02 fuses).



LSG 36 / 36 H contactor box

- :: Professional grade contactor box for power extension.
- :: In combination with 9 kW capable control units suitable for sauna heaters up to 45 kW power.
- :: LSG 36: power output 2 x 18 kW.
- :: LSG 36 H: power output 2 x 18 kW + additionally 4 kW, optimal for Bi-O type sauna heaters.
- :: Integrated fuse box (for Neozed D02 fuses).

NOTICE: LSG 18 / 36 devices require Neozed D02 type fuse inserts. Fuse inserts are NOT included and should be specified on site as per selected heater power.





Model	Item no.	Switching Power	Size (H x W x D)
EmoTec LSG 09 R	94.4998	9,0 kW	240 x 230 x 70 mm
LSG 18	94.5730	18,0 kW	270 x 300 x 100 mm
LSG 18 H	94.5731	18,0 + 4,0 kW	
LSG 36	94.4392	36,0 kW	450 x 300 x 145 mm
LSG 36 H	94.4230	36,0 + 4,0 kW	



Cover protection rail

- :: Cover protection safety rail for sauna heaters.
- :: Simple installation, may be retrofitted into an existing sauna.
- :: High reliability and safety.
- :: Available in 5 sizes for EOS sauna heaters.
- :: Approved safety solution - complies with the current European safety norm (EN 60335-2-53).

Emergency button

- :: Special double action emergency button for saunas.
- :: 2 separate circuits (1 x normally closed, 1 x normally open).
- :: Extra-long housing for easy installation in sauna cabin walls.
- :: Two circuits allow to launch two separate actions once the button is pressed: e.g. switch off the heater and trigger an alarm.
- :: Visible front side - IP65 protection class.
- :: Also available in set with a wooden plate (beech wood).



EOSafe L

EOSafe D

EOSafe

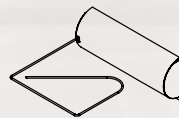
- :: EOSafe is an innovative safety solution for sauna cabins.
- :: **EOSafe L** - for supervision of the sauna heater through a light ray solution with an emitter/receiver on the ceiling and a 25 or 50 mm reflector mounted on the heater. Set includes control unit, emitter/receiver unit, reflector and cables.
- :: **EOSafe D** - safety solution based on door supervision. The system is able to detect an unauthorized opening of the door and through this ensure due safety. Set includes control unit, RFID device (for glass doors), authorization chip, cables.
- :: The EOSafe is also available as a combination of the „L“ and „D“ solutions with one central controller.
- :: Power supply: 230 V 1N AC
- :: Compatible sauna controls: EOS Econ D4/H4, EOS EmoTec-/EmoStyle-/EmoTouch 3-series. Connection through S-Bus.

:: SAUNA SAFETY

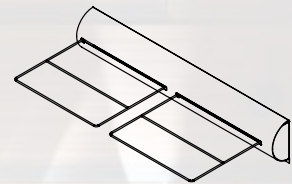
The cover protection rail has been developed by EOS and offers a highly reliable, safe and at the same time simple to use safety solution for sauna cabins with an automatic or remote switching. The rail is mounted directly over the heater to the sauna wall. At free standing sauna heaters it is possible to mount the rail directly on the heater (at many models).

The cover protection rail will react even at a very small pressure. If a towel or a similar object is placed on the heater the rail will bend down and will immediately interrupt the active heating or such heating may not start. After the object is removed, the rail returns to the normal position and the usual operation continues. This prevents the sauna heater from being switched on in an unsafe condition and effectively minimizes the risk of sauna fire.

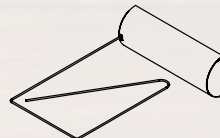
In conjunction with an EOS sauna heater and control unit the cover protection rail represents a norm-compliant and approved safety solution.



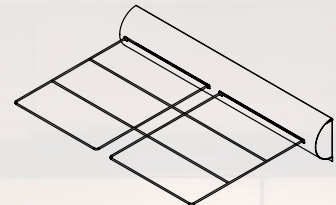
Type 1 #94.4421
HWD 140 x 328 x 328 mm



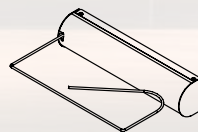
Type 3 #94.4425
HWD 140 x 728 x 322 mm



Type 4 #94.4724
HWD 140 x 328 x 482 mm



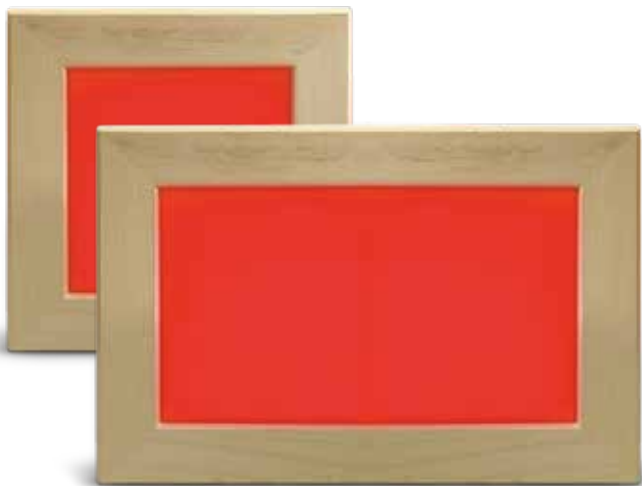
Type 5 #94.4725
HWD 140 x 728 x 482 mm



Type 6 #94.5624
HWD 140 x 328 x 222 mm

Model	Item no.
Emergency button with cover plate	94.5777
Emergency button without cover plate	94.5779
EOSafe L with 25 mm reflector	94.7151
EOSafe L with 50 mm reflector	94.7150
EOSafe D (door supervision)	94.7149
EOSafe L & D, with 25 mm reflector	94.7153
EOSafe L & D, with 50 mm reflector	94.7152

Model	Item no.	Size (H x W x D)
Cover protection rail type 1	94.4421	140 x 328 x 322 mm
Cover protection rail type 3	94.4425	140 x 728 x 322 mm
Cover protection rail type 4	94.4724	140 x 328 x 482 mm
Cover protection rail type 5	94.4725	140 x 728 x 482 mm
Cover protection rail type 6	94.5624	140 x 328 x 222 mm



EOS Emolux 3S

- :: LED coloured light system for ceiling installation in sauna cabins.
- :: Resistant to high sauna temperatures thanks to the special protective glass screen with wooden frame (Abachi wood).
- :: High light intensity with rich, powerful colours. Full surface illumination. Seamless colour transitions.
- :: Dimmable light intensity (voltage based LEDs).
- :: Recessed installation in sauna ceiling.
- :: Three basic colours (RGB), various mixed colours possible.
- :: Control options:
 - Control module SBM-FL75/150 in conjunction with EOS EmoTec-/EmoStyle-/EmoTouch 3-series control units.
 - Stand-alone controller 230 V with a wireless remote control.
- :: Power: EOS Emolux 3S - 36 W, EOS Emolux 3S+ - 72W



EOS LED Strip

- :: New generation LED strips - up to 110°C heat resistant and therefore in many cases suitable for installation in the sauna ceiling area.
- :: Integrated electronic overheating protection for every LED.
- :: Improved performance - up to 110 lumen light per watt of power consumption.
- :: Slim size plug on both ends allows quick connection of strips in longer chains.
- :: Durable construction with mounting holes for quick installation on any flat surface.
- :: Available as RGB type and as warm white light type.
- :: Every strip may be shortened to 2/3 or 1/3 length.
- :: Dimmable (24 V, voltage controlled LEDs).
- :: Size 495 x 15 x 5 mm (L x W x H)
- :: Control e.g. with the coloured light module SBM-FL75/150, stand-alone controller or transformer.

Accessories

Connection and extension cables for LED strips. Available in various lengths.



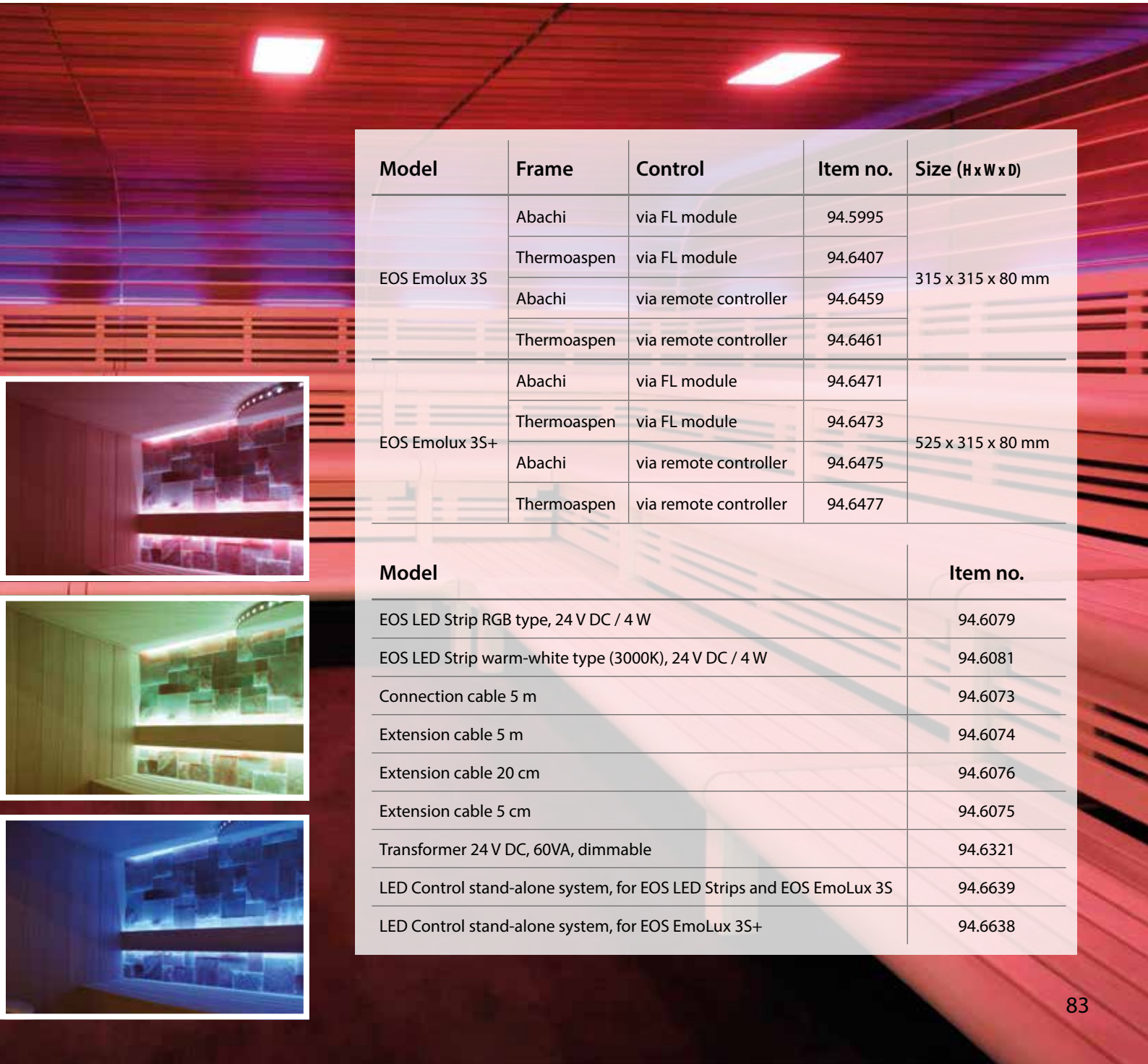
Transformer 24 V DC 60VA for white light LED strips. Aluminium housing IP65.

:: COLOURED LIGHT



LED Control

- :: Stand-alone control system for LED strips and Emolux light panels.
- :: Includes compact size wireless remote control with wall holder.
- :: Up to 20 m control range, no direct line of sight needed.
- :: Includes 230 V power adaptor, main electronic unit and 5 m connection cable.
- :: Easy to install, easy to use. Not dependent on a specific sauna control unit model.
- :: Direct colour selection, color sequences, special effects and many other functions.



Model	Frame	Control	Item no.	Size (H x W x D)
EOS Emolux 3S	Abachi	via FL module	94.5995	315 x 315 x 80 mm
	Thermoaspen	via FL module	94.6407	
	Abachi	via remote controller	94.6459	
	Thermoaspen	via remote controller	94.6461	
EOS Emolux 3S+	Abachi	via FL module	94.6471	525 x 315 x 80 mm
	Thermoaspen	via FL module	94.6473	
	Abachi	via remote controller	94.6475	
	Thermoaspen	via remote controller	94.6477	



Model	Item no.
EOS LED Strip RGB type, 24 V DC / 4 W	94.6079
EOS LED Strip warm-white type (3000K), 24 V DC / 4 W	94.6081
Connection cable 5 m	94.6073
Extension cable 5 m	94.6074
Extension cable 20 cm	94.6076
Extension cable 5 cm	94.6075
Transformer 24 V DC, 60VA, dimmable	94.6321
LED Control stand-alone system, for EOS LED Strips and EOS EmoLux 3S	94.6639
LED Control stand-alone system, for EOS EmoLux 3S+	94.6638

:: STEAM GENERATORS





FOR MODERN STEAM ROOMS AND HAMMAMS

:: STEAM GENERATORS

EOS STEAMROCK - INNOVATIVE AND UNIQUE

The EOS SteamRock features a construction with numerous smart features.

The integrated automatic descaling system will remove the scale from the water tank and drain it after use, which considerably reduces the maintenance costs.

The entire construction has been designed to last and sets standards in terms of durability and reliability even in the most intensive commercial operation.

EOS SteamRock stands out thanks to the innovative construction details, which make the installation and use more flexible and easy. The steam output pipe can be for instance turned around at 180° to let the steam pipeline rise upwards. The power output can be quickly changed on site in 3 kW steps, e.g. from 18 kW to 15 kW or 12 kW, which makes the planning and stock management more flexible and cost-effective.

Model	Power	Item no.	Steam output
EOS SteamAttrac	3,0 kW	94.6838	4 kg/h
	4,0 kW	94.6839	5 kg/h
	6,0 kW	94.6840	8 kg/h
EOS SteamRock II Basic	3,0/6,0/9,0 kW	94.7266	4 / 8 / 12 kg/h
	9,0/12,0/15,0/18 kW	94.7267	12 / 16 / 20 / 24 kg/h
EOS SteamRock II Premium	3,0/6,0/9,0 kW	94.7260	4 / 8 / 12 kg/h
	9,0/12,0/15,0/18,0 kW	94.7261	12 / 16 / 20 / 24 kg/h

EOS SteamAttrac

3,0
4,0
6,0



- :: Affordable steam generator for steam rooms and humid saunas. Recommended for residential use.
- :: Operation based on heating elements. Compact size housing for wall-mounting installation.
- :: Water tank made of reinforced 1.5 mm stainless steel.
- :: Maintenance-friendly design - easy access to all parts.
- :: Input for discaler liquid on the upper side 1/2" nozzle
- :: High-performance heating elements mounted on special blocks.
- :: Dry-run protection with reset function.

EOS SteamRock II Basic

- :: High performance premium class steam generator for steam rooms.
- :: For demanding users, ideal for intensive commercial use.
- :: New, improved construction with up to 50% faster heat-up time.
- :: Durable, reinforced water tank made of high grade stainless steel.
- :: Variable power output, may be adjusted on site in 3 kW steps.
- :: Compact wall-hanging unit, extra-large Ø35 mm steam output.
- :: Automatic descaling system (chemical cleaning). 5 l container for cleaner with level probe included in delivery. Cleaner liquid - optionally available.
- :: Without control unit. Suitable control unit - e.g. LSG Steam for EOS EmoTouch 3, EOS Econ S2.
- :: Size: HWD 67 x 46 x 35 cm.



3,0
6,0
9,0
12,0
15,0
18,0

EOS SteamRock II Premium

3,0
6,0
9,0
12,0
15,0
18,0



- :: High end steam generator for very demanding domestic and commercial users with particular demands for visual design and functions.
- :: Includes luxury EOS EmoTouch 3 control system - the 7" colour touch screen display can be installed up to 50 m away from the steam generator.
- :: Innovative operation via the visual graphic interface optimized for steam room control. Full range of functions and special fine tuning features.
- :: Allows quick connection of further generators. Allows connection and control of separate steam rooms and saunas (up to 8 cabins) from one display.
- :: Suitable for hammam operation thanks to the optional floor, bench and wall temperature sensors. Control for light, 2 fans, volt-free output.
- :: Integrated essence dosing system for 2 fragrances (two pumps).



Water softening devices

- :: For steam generators and other vaporizers.
- :: Compact floor-standing model with electronic control and containers for salt tablets.
- :: Reliable water softening system with control valve BNT 1650F for 1-6 persons (AKE 40) / 8-20 persons (AKE 120).
- :: Automatic bypass directs the water past the system during regeneration.
- :: Integrated mixing valve for setting the water hardness.
- :: Pressure-resistant container with high quality ion exchange resin.
- :: Cabinet container also serves as brine preparation tank – practical and space-saving.
- :: Regeneration period: 25 Min.

EOS Econ S2

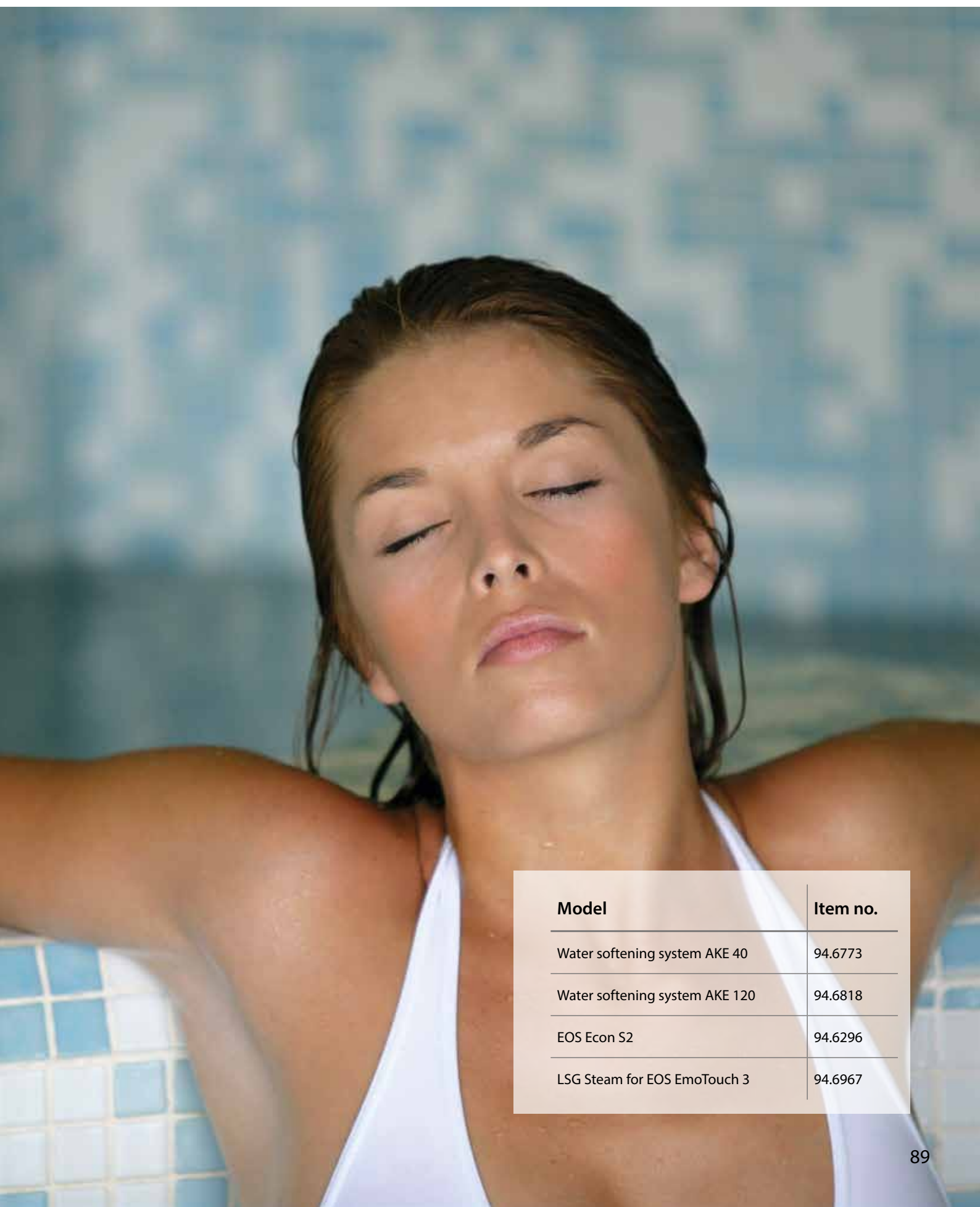
- :: Inexpensive electronic control unit for EOS SteamRock II Basic and EOS SteamAttrac steam generator.
- :: Suitable for domestic and commercial operation.
- :: With essence dosing control functions - direct connection of a 230 V dosing pump possible. No need for a separate dosing control system.
- :: Temperature sensor with 5 m cable included in delivery (20 m and 50 m cable optionally available).
- :: LCD display with multi-language menu navigation. Guided setup.
- :: Large scope of functions - hysteresis adjustment 1-5K, fan control, essence dosing control, variable heating time limitation, timer, detection of errors and faults in the steam generator.
- :: Single event 24 h timer or automatic recurring switching time for commercial use. Keypad lock and restricted access mode.



LSG Steam für EOS EmoTouch 3

- :: LSG Steam extension module allows to operate the steam generators like EOS SteamRock II Basic and EOS SteamAttrac, as well as many other brands.
- :: Compatibility by 3rd party brands should be checked in advance.
- :: Output - switch signal 230 V , no load switching.
- :: Includes 10 m sauna bus connection cable and a digital temperature sensor with 5 m cable.
- :: Note: not needed for EOS SteamRock II Premium NC, these models are operated directly from EOS EmoTouch 3.

:: STEAM ROOM EQUIPMENT



Model	Item no.
Water softening system AKE 40	94.6773
Water softening system AKE 120	94.6818
EOS Econ S2	94.6296
LSG Steam for EOS EmoTouch 3	94.6967

:: STEAM ROOM EQUIPMENT

Model	Item no.
Dosing pump 230 V / 8 W	94.6297
Dampfdüse SteamRock	2001.5575
Blower fan (with non-return valve)	2001.4401
Extractor fan	2001.4402
Disc valve for extractor fan	2001.4404
Stainless steel disc valve	2001.5210
Descaling liquid 5 l	2001.6065

Model	Item no.
EOS LED Strip SR warm white 24 V 3 W 355 mm	94.6646
EOS LED Strip SR RGB 24 V 3 W 355 mm	94.6654
EOS LED Strip SR flex warm-white light type (3000 K)	94.7318
EOS LED Strip SR flex RGB type	94.7317



Essence dosing pump

- :: Essence dosing pump for steam rooms. Great for EOS Econ S2.
- :: High quality peristaltic pump in robust metal housing with anthracite powder coating finish.
- :: Includes pre-mounted connection cable.
- :: Includes brass essence injector.
- :: Dosing performance up to 5 l/h. Protection class IP20.

Descaling liquid

- :: Descaling liquid for steam generators. Phosphoric acid solution, designed for SteamRock steam generators.
- :: 5 l canister.



EOS LED Strip SR for steam rooms

- :: Ideal for steam rooms. Exceptionally high light output - up to 160 lumen per watt.
- :: Humidity protection IP65, high mechanical protection thanks to the robust aluminium profile.
- :: Very compact, slim size - only 20 x 9 mm. With pre-mounted 5 m connection cable.
- :: Very simple and quick installation thanks to mounting holes and slim connectors.
- :: Available as RGB coloured light type and as white light type (3000 K).
- :: Available in the lengths 355 mm, 520 mm, 1015 mm, 2005 mm, 2170 mm, 2335 mm and 2500 mm.



EOS LED Strip SR flex for steam rooms

- :: Special flexible LED strip designed for steam rooms and similar high humidity installations.
- :: 24 V DC, 72 W. IP68 protection class. Dimmable (constant voltage).
- :: Approx. 5 m length, with 5 m connection cable on both ends. Adhesive layer on the rear side, mounting brackets for mechanical fixation included in delivery.
- :: Available as RGB coloured light type and as white light type (warm white 3000K).
- :: Dividable, can be shortened in 10 cm steps.



Blower / Extractor fan

- :: Blower fan DN 100 (80 W T50), with an external 5-step speed controller.
- :: With a non-return valve.



Steam outlet

- :: Heat-resistant plastic. With 1 1/4" ext. thread.
- :: New design for improved steam flow distribution, integrated holder for essences.



Blower / Extractor fan

- :: Extractor fan DN 100 (12,5 - 15 W) 230 V 50 Hz, for steam rooms.
- :: Disc valve for extractor fan (non-return valve, optional).



A person is relaxing in a hot tub, with their legs visible in the foreground. The background is a dark wall with two glowing blue square lights. The text is overlaid on the image.

:: INFRARED EQUIPMENT

:: ESSENCE DOSING



:: FLAKE ICE MACHINES

EQUIPMENT FOR SPA & WELLNESS

:: INFRARED RADIATORS

Model	Item no.	Size (H x W x D)
EOS IRS 3 Ceramic	94.1878	530 x 185 x 75 mm
EOS IRS 35 RHK	94.4305	870 x 185 x 65 mm
EOS IRS 50 RHK	94.4306	
EOS IRS 4 RHK with pre-mounted plug	94.2862	530 x 185 x 65 mm
EOS IRS 4 RHK with unmounted plug	94.4012	
EOS Vitae 350 W	94.2865	900 x 184 x 65 mm
EOS Vitae 500 W	94.2576	
EOS Vitae 750 W	94.2577	
EOS Vitae Compact 350 W	94.7302	745 x 184 x 65 mm
EOS Vitae Compact 500 W	94.7303	
EOS Vitae Compact 750 W	94.7304	
EOS Vitae Protect 350 W	94.6502	950 x 200 x 60 mm
EOS Vitae Protect 500 W	94.5450	
EOS Vitae Protect 750 W	94.5451	
EOS Vitae Protect 350 W no grill	94.6572	
EOS Vitae Protect 500 W no grill	94.6573	
EOS Vitae Protect 750 W no grill	94.6574	
EOS Vitae Protect Compact 350 W	94.7293	
EOS Vitae Protect Compact 500 W	94.7295	795 x 200 x 60 mm
EOS Vitae Protect Compact 750 W	94.7296	
EOS Vitae Protect Compact 350 W no grill	94.7287	
EOS Vitae Protect Compact 500 W no grill	94.7288	
EOS Vitae Protect Compact 750 W no grill	94.7289	

EOS IRS 3 Ceramic

- :: IR-radiator for IR warming cabins.
- :: With 300 W ceramic emitter, IR-C range.
- :: With reflector, metal housing, safety grill and cable.



EOS IRS 35/IRS 50 RHK

- :: IR-radiator for IR warming cabins. IR-C range.
- :: 350 W or 500 W emitter (tube type with magnesia oxide filling)
- :: With reflector, metal housing, safety grill and cable.

EOS IRS 4 RHK

- :: IR-radiator for IR warming cabins. IR-C range.
- :: 400 W emitter (tube type with magnesia oxide filling)
- :: With reflector, metal housing, safety grill and cable.



EOS Vitae / Vitae Compact

- :: High performance IR-radiator for IR warming cabins.
- :: Full spectre - IR-A, IR-B and IR-C range.
- :: Full power output in less than 1 sec, very high intensity.
- :: VITAE type quartz glass emitter with 350, 500 or 750 W.
- :: With reflector, metal housing, safety grill and cable.
- :: **EOS Vitae Compact:** extra-short version - 745 mm length.



EOS Vitae Protect / Vitae Protect Compact

- :: With special glass ceramic screen shield in front of the heat emitter - for a wider heat distribution and additional protection against water drops or humidity during cabin use.
- :: New design protective safety grill. Alternatively available also without the safety grill.
- :: VITAE type quartz glass emitter with 350, 500 or 750 W.
- :: With reflector, metal housing, safety grill and cable.
- :: **EOS Vitae Protect Compact:** extra-short version - 795 mm length.



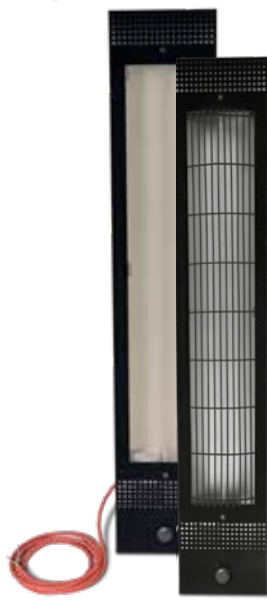
image similar

EOS Vitae+ / Vitae+ Compact

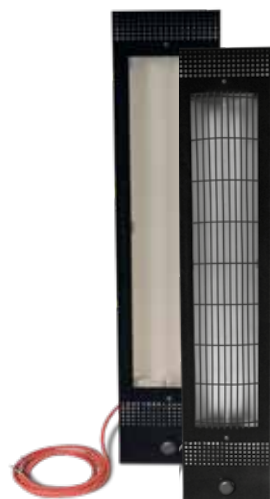
- :: Full spectre IR radiator with high-performance quartz glass emitter and built-in dimmer.
- :: With high-performance VITAE quartz-glass emitter 350, 500 or 750 W.
- :: With pre-assembled housing with reflector shield and protective flocked safety grill (black).
- :: **EOS Vitae+ Compact:** extra-short version - 835 mm length.

EOS Vitae Protect+ / Vitae Protect+ Compact

- :: IR radiator With built-in dimmer for quick heat adjustment.
- :: With special ceramic glass filter for additional dispersion of the infrared heat and humidity protection.
- :: Full-spectre range – IR-A, IR-B and IR-C, full power output in less than 1 sec. Dimmable.
- :: Available with or without protective flocked safety grill (black).
- :: **EOS Vitae Protect+ Compact:** extra-short version - 885 mm length.



EOS Vitae Protect+



EOS Vitae Protect+ Compact

EOS InfraTec Classic

- :: Electronic control unit for infrared warming cabins.
- :: Alphanumeric LCD display (time, functions, error messages).
- :: Temperature control range 30 - 70 °C.
- :: Heating time 1 - 99 min. Switch for cabin lighting (230 V).
- :: Recessed installation. Available with a pre-mounted cable set or without a cable set. Temperature sensor included.
- :: 3.500 W power output, 230 V 1N AC power supply.



EOS Econ I1


- :: Electronic control unit for IR warming cabins. Ideal for large commercial cabins - 9 kW switching power (400 V 3N AC power supply).
- :: Alphanumeric LCD display (time, functions, temperature, heating time). Menu navigation in 12 languages.
- :: Temperature control range 30 - 70 °C.
- :: Keypad lock, light switch, heating time up to 6 h, quick timer mode „Life Guard“



:: INFRARED EQUIPMENT

Model	Item no.	Size (H x W x D)
EOS Vitae+ 350 W	94.7000	990 x 185 x 65 mm
EOS Vitae+ 500 W	94.7001	
EOS Vitae+ 750 W	94.6862	
EOS Vitae+ Compact 350 W	94.7299	835 x 185 x 60 mm
EOS Vitae+ Compact 500 W	94.7300	
EOS Vitae+ Compact 750 W	94.7301	
EOS Vitae Protect + 350 W	94.9697	1040 x 200 x 60 mm
EOS Vitae Protect + 500 W	94.6998	
EOS Vitae Protect + 750 W	94.6999	
EOS Vitae Protect + 350 W no grill	94.6995	
EOS Vitae Protect + 500 W no grill	94.6996	
EOS Vitae Protect + 750 W no grill	94.6863	
EOS Vitae Protect + Compact 350 W	94.7296	885 x 200 x 60 mm
EOS Vitae Protect + Compact 500 W	94.7297	
EOS Vitae Protect + Compact 750 W	94.7298	
EOS Vitae Protect + Compact 350 W no grill	94.7290	
EOS Vitae Protect + Compact 500 W no grill	94.7291	
EOS Vitae Protect + Compact 750 W no grill	94.7292	
EOS InfraTec Classic without cable set	94.4388	140 x 195 x 50 mm
EOS InfraTec Classic with pre-mounted cable set	94.4334	
EOS Econ I1	94.5768	220 x 250 x 60 mm

:: CONTROL UNITS FOR INFRARED



The background image shows the interior of a wooden sauna. The walls, ceiling, and benches are made of light-colored wood. Several infrared heaters are mounted on the walls, and control units are visible on the ceiling. The lighting is warm and ambient.

Model	Item no.	Size (H x W x D)
EOS InfraTec Premium	94.5255	Display panel: 130 x 118 x 24 mm Relay box: 240 x 230 x 70 mm
EOS EmoTec IR anthracite / silver	94.7044	Display panel: 127 x 130 x 25 mm Relay box: 270 x 300 x 100 mm
EOS EmoTec IR white / silver	94.7045	
EOS InfraStyle black	94.7046	Display panel: 127 x 130 x 25 mm Relay box: 270 x 300 x 100 mm
EOS InfraStyle white	94.7047	
EOS InfraStyle i white acer	94.7049	Display panel: 200 x 140 mm Relay box: 270 x 300 x 100 mm
EOS InfraStyle i black acer	94.7048	
EOS InfraStyle i white walnut	94.7071	
EOS InfraStyle i black walnut	94.7070	



EOS InfraTec Premium

- :: Electronic control unit for IR warming cabins.
- :: Compact size recessed control panel, separate relay box.
- :: Illuminated alphanumeric LCD display (time, functions, temperature, remaining time). Multi-language menu navigation.
- :: Temperature control range 30 - 70 °C.
- :: 3.500 W power output, 230 V 1N AC power supply.
- :: Optional sensor for heating foils.
- :: Three separate heating zones (rear and front - dimmable, feet - switchable). Light switch.

EOS EmoTec IR

- :: Electronic premium-class control panel for infrared cabins. For residential and commercial use.
- :: Heating control as per air temperature or heat intensity.
- :: 3 separate outputs: 2 x 1500 W dimmable, 500 W switchable.
- :: Up to 5 channels - allows to create individual zones or heating groups (e.g. back, front, side, etc.).
- :: Supports all types of IR emitters and heating foils.
- :: Total power output can be increased to 10.5 kW with extension modules SBM-IR.



EOS InfraStyle

- :: Electronic luxury-class control panel for infrared cabins. For residential and commercial use.
- :: Based on the proven construction of the control unit EOS EmoStyle.
- :: Luxurious display panel with glass front and capacitive buttons.
- :: Available in black or white design.
- :: Functions and features as EOS EmoTec IR model.

EOS InfraStyle i

- :: Electronic luxury-class control panel for infrared cabins with the display panel for installation inside infrared cabin. Flush-mounted installation.
- :: Luxurious display panel with glass front and natural wood inlay of acer or walnut, capacitive buttons.
- :: TFT colour display with menu navigation in 18 languages.
- :: Available in four designs: black or white glass panel, wooden inlay made of natural acer or walnut wood.



EOS IR heating foils

- :: IR-heating foils for infrared cabins.
- :: Available in power outputs: 90 / 275 / 350 / 450 / 550 / 650 W.
- :: Different sizes from 600 x 300 mm to 1700 x 800 mm.
- :: Concealed installation under the wooden surface.
- :: Working temperature approx. 110°C.
- :: Automatic temperature limitation at 120°C.
- :: With connection cable and on-surface high limiter.



Corner cover

- :: Corner cover for IR radiators, with black protective flocking.
- :: Very practical for IR radiator installation in corners.
- :: Universally fits all EOS IR radiators.

Dimmer for IR radiators

- :: Dimmer for manual adjustment of heat intensity.
- :: Particularly recommended for Vitae quartz radiators.
- :: Simple and easy adjustment of power without having to leave the cabin. Recessed installation in cabin wall.
- :: Max. power up to 1000 W.



EOS InfraSteam auxiliary vaporizer

- :: Compact vaporizer for domestic infrared cabins.
- :: Essence cup at the steam exit. Very easy to use, manual water filling.
- :: Built-in control unit. Very slim, place-saving design.
- :: 750 W power output, optimal for 1-2 person cabins.
- :: 230 V, with 3 m mains cord with plug.



:: INFRARED EQUIPMENT



Model	Item no.	Size (H x W x D) / Description
EOS IR heating foils 650 W	94.3742	Foil size: 1700 x 800 mm Heating surface: 1620 x 720 mm
EOS IR heating foils 550 W	94.3743	Foil size: 1450 x 800 mm Heating surface: 1370 x 720 mm
EOS IR heating foils 450 W	94.3744	Foil size: 1600 x 600 mm Heating surface: 1520 x 520 mm
EOS IR heating foils 350 W	94.3745	Foil size: 1250 x 600 mm Heating surface: 1170 x 520 mm
EOS IR heating foils 275 W	94.3835	Foil size: 1600 x 400 mm Heating surface: 1520 x 320 mm
EOS IR heating foils 90 W	94.3891	Foil size: 600 x 300 mm Heating surface: 520 x 220 mm
Corner cover	94.4566	
Dimmer	94.4954	80 x 80 x 55 mm
IR plug adaptor for 5 radiators	94.4960	Connects up to 5 radiators in one line
Connection cable 2,5 m with plug	94.4396	For further connection to control unit
EOS InfraSteam	94.4140A	520 x 225 x 120 mm

:: INFRARED & TANNING SYSTEMS

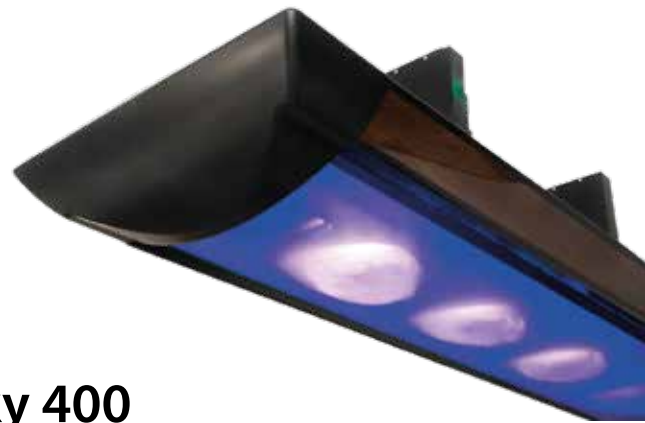


Model	Item no.
InfraSky 3000 IR RAL 9022 silver grey	94.4307
Infrasky 3000 IR RAL 9011 black	94.4315
SunSky 400 RAL 9022 silver grey	95.7199
SunSky 400 RAL 9011 black	95.7200
SunSky 400 RAL 9016 white	95.7201



InfraSky 3000 IR system

- :: Designer ceiling-mounted infrared heating system for relaxation.
- :: For domestic and commercial operation.
- :: Perfect for relaxation zones, e.g. mounting over lounge chairs.
- :: Thanks to the ceiling-mounting provides full freedom of movement, does not block floor space.
- :: Provides comforting, cozy warmth - ideal for relaxation and rest.
- :: 6 x high performance 500 W Vitae emitters.
- :: Stylish, sleek housing, available in various finishes.
- :: Requires an external control unit (e.g. SunTec).



SunSky 400

- :: Luxury class designer soft-tanning system for ceiling mounting.
- :: Suitable for domestic and intensive commercial use.
- :: Thanks to the ceiling-mounting provides full freedom of movement, does not block floor space.
- :: Special UV-filters provide soft-tanning and allow long, relaxing tanning times - perfect for relaxation and rest.
- :: 4 x 400 W high-pressure tanners.
- :: Requires an external control unit (e.g. SunTec).



E-Cool Wall flake ice machine

- :: Automatic flake ice machine for concealed installation.
- :: With bottom ice chute or with side ice chute - allows flexible installation options.
- :: Fully automatic, very low noise operation.
- :: With a built-in or with an external ice level sensor (incl. mounting bracket and cable).
- :: Stainless steel chute (tube type) included in delivery.
- :: Built-in status LEDs allow to quickly check the current operation status.
- :: Up to 120 kg ice per day production capacity.
- :: Metal housing with anthracite finish, connection on the rear side (water inlet for ice production, water drain (melting water), water inlet & drain for cooling, mains).
- :: 230 V 1N AC power supply.



:: FLAKE ICE MACHINES



Model	Item no.	Size (HxWxD)
E-Cool Wall B with bottom ice chute, internal ice level sensor	94.6096	560 x 530 x 525 mm
E-Cool Wall B with bottom ice chute and external ice level sensor	94.6220	
E-Cool Wall S with side ice chute, internal ice level sensor	94.6087	
E-Cool Wall S with side ice chute and external ice level sensor	94.6221	

AromaTec II

- :: Essence dosing and automatic water splash system for saunas.
- :: Available with dosing for 1, 2 or 3 fragrances.
- :: Completely pre-mounted on a robust metal panel.
- :: With electronic control unit, dosing pump(s) and 1 l container(s) for fragrances.
- :: 3,2" colour touch screen display for easy and convenient operation.
- :: Operation via the built-in control unit or an external push-button. Cycles, quantity and intensity adjustable. Week timer, password protection, log file.
- :: Automatic delay during sauna heat-up time. 230 V 1N power supply.



AromaTec II Basic

- :: Essence dosing and automatic water splash system for saunas.
- :: Integrated controller with LCD display. Very simple and easy to use.
- :: Two operation modes: automatic cycle or manual switching via a remote push button.
- :: Settings: start time delay, water quantity, dosing intensity, cycle time or time interval by manual dosing.
- :: Built-in peristaltic pump for 1 fragrance.
- :: Completely pre-mounted on a robust metal panel. 230 V 1N power supply.

DuftTec Quattro W

- :: Dosing system for steam rooms.
- :: For 4 fragrances (4 separate dosing lines, 4 pumps).
- :: 4 peristaltic pumps SA-type with dosing tubes 3,2 x 1,6 V with tube holder 4x1 mm and suction tube (PE 0,8 m), with UNPL control unit.
- :: Adjustable intervals and dosing intensity. Pre-mounted on PE board for quick installation and connection. 230 V 1N power supply.



DuftTec Quattro T

- :: Dosing system for steam rooms.
- :: For 4 fragrances (4 separate dosing lines, 4 pumps).
- :: Advanced microprocessor-based control unit, 6 time programs (8 - 20 minutes), 6 dosing quantities per fragrance (0 - 4 ml per injection), 5 status LED lamps.
- :: 4 peristaltic pumps SA type with dosing tubes 3,2 x 1,6 V and tube holder 4x1 mm and suction tube (PE 0,8 m).
- :: 230 V 1N power supply.

:: ESSENCE DOSING SYSTEMS

DuftTec Solo

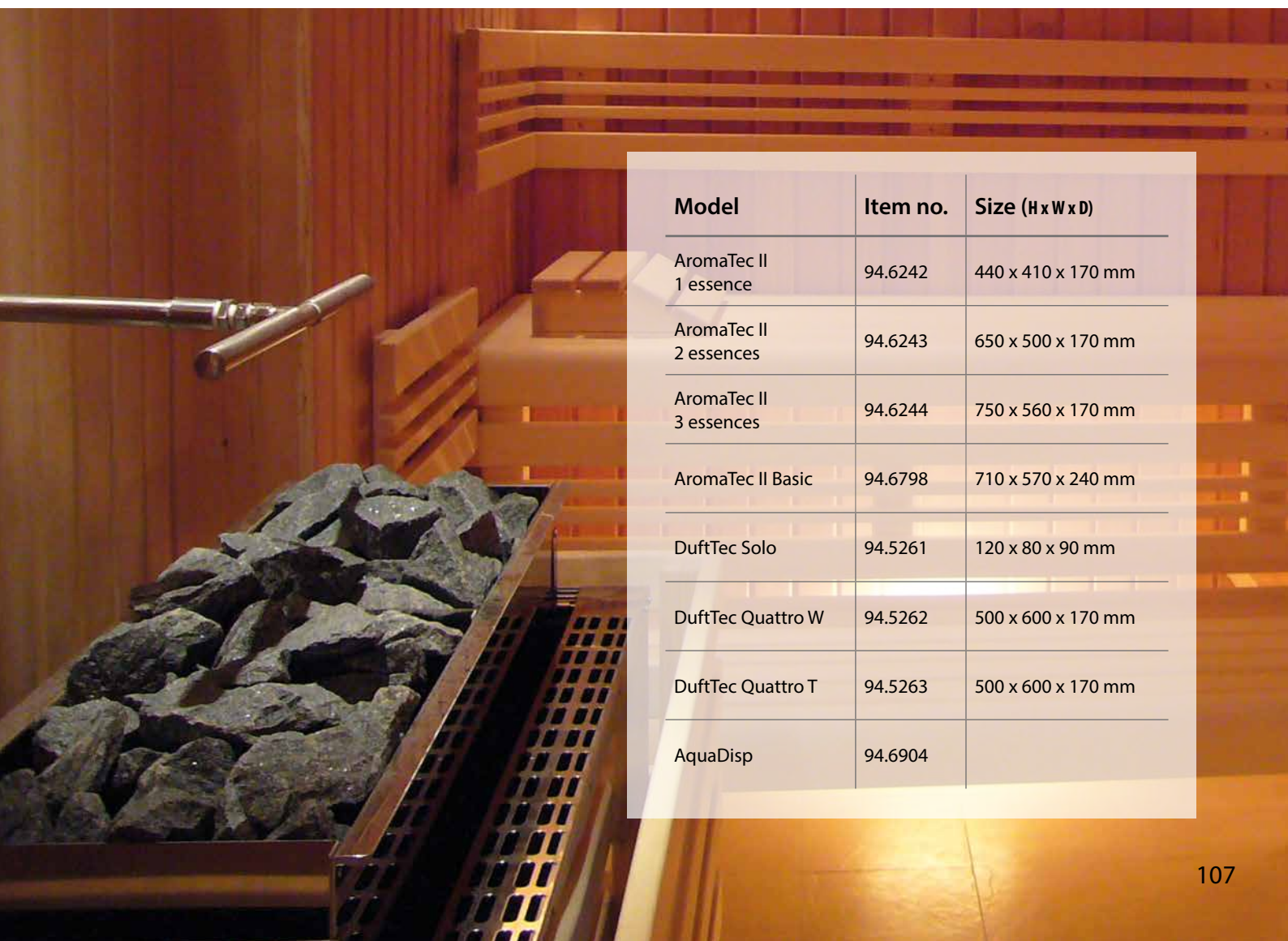
- :: Essence dosing system for steam rooms.
- :: Integrated controller. Very simple and easy to use.
- :: Peristaltic pump with dosing intensity adjustment via interval setting.
- :: Dosing time adjustable (inside housing)
- :: Operation only by active steam production. 230 V 1N power supply.



AquaDisp



- :: Automatic water splash system for saunas. Water splash can effect automatically at pre-set intervals or manually with an optional push-button.
- :: Recommended for instance for hidden heaters.
- :: With dosing valve in stainless steel housing, electronic control unit, dosing hose for connection to a sauna heater.
- :: Push button with cover plate optionally available.
- :: For control units EOS Econ D1-D3 and H1-H3 an additional power adaptor 94.7166 is required.



Model	Item no.	Size (H x W x D)
AromaTec II 1 essence	94.6242	440 x 410 x 170 mm
AromaTec II 2 essences	94.6243	650 x 500 x 170 mm
AromaTec II 3 essences	94.6244	750 x 560 x 170 mm
AromaTec II Basic	94.6798	710 x 570 x 240 mm
DuftTec Solo	94.5261	120 x 80 x 90 mm
DuftTec Quattro W	94.5262	500 x 600 x 170 mm
DuftTec Quattro T	94.5263	500 x 600 x 170 mm
AquaDisp	94.6904	

:: SALT INHALATION SYSTEMS

Model	Item no.
DuftTec dosing set DD Dosing valve VA 3/8" - 4 x 1, 3 m dosing tube PTFE 4 x 1	94.5267
DuftTec dosing valve Dosing valve VA 3/8" - 4 x 1	94.5268
Console for esseice containers up to 10 l Material: PE black; size HWD: 600 x 235 x 240 mm	94.5269
Steam outlet LD kit V4A stainless steel pipe with connector for steam and fresh air	94.5270
Push button panel 4-fold (no illumination) 4-fold push button panel for DuftTec Quattro T, incl. 5 m cable	94.5271
Push button panel 1-fold (with illumination) 1-fold push button panel for SolTec and AromaTec Systems, incl. 5 m cable	94.5143
Bottom housing for flush-mounting installation of 4-fold push button panel, black	94.5272
Bottom housing for flush-mounting installation of 1-fold push button panel, black	94.5137
Wall-through connector for AromaTec units, stainless steel, thread connection	94.5192
Sprinkle head for AromaTec units, stainless steel, thread connection	94.5191
SolTec II SL	94.6245
SolTec V3	94.6246
Salt solution for SolTec 6 x 1 l (boxed) with 6 bags (ca. 5% brine) à 1 l, incl. disinfecting tabs	94.5273
Salt solution for SolTec 6 x 5 l (boxed) with 6 bags (ca. 5% brine) à 5 l, incl. disinfecting tabs	94.5274

DuftTec / AromaTec accessories

- :: DuftTec dosing set DD: dosing valve VA 3/8" - 4 x 1, 3 m dosing tube PTFE 4 x 1.
- :: DuftTec dosing valve: VA steel 3/8" - 4 x 1.
- :: Console for canisters up to 10 l. For various dosing systems.
- :: Steam outlet LD, V4A stainless steel mixing pipe, connection for steam and air.
- :: Button plate 4 fold (no illumination) for DuftTec Quattro T dosing system.
- :: Button plate 1-fold (with illumination) for SolTec and AromaTec systems.
- :: Bottom housing for flush-mounting installation of 4- / 1-fold push button panel
- :: Wall-through connector for AromaTec units.
- :: Sprinkle head for AromaTec units.



SolTec II SL salt nebulizer

- :: Salt nebulizer for inhalation in dry rooms like saunas and salt grottos.
- :: New generation system with 3,2" colour touch-screen display control unit, numerous comfort features (week timer, password protection ...)
- :: Peristaltic pump with speed control for adjustable dosing quantity, diaphragm compressor, disinfecting set.
- :: Console VA for 5 l salt solution bag, high grade stainless steel 2-way injector with bezel and wall-through connector.
- :: Completely pre-mounted on robust metal plate for wall-mounting.
- :: Optional: salt solution in 1 l or 5 l plastic bags.



SolTec V3 salt nebulizer

- :: Salt nebulizer for inhalation in steam rooms.
- :: Dosing capacity up to 100 ml/min in continuous operation.
- :: With top quality diaphragm pump, separate for low-noise operation.
- :: New generation 3,2" touch-screen control panel with numerous functions.
- :: Stainless steel injector with bezel and wall-through connector, 5 m dosing tube PTFE 4x1.
- :: Disinfecting set, console VA for 5 l salt solution bags.
- :: Optional: salt solution in 1 l or 5 l plastic bags.



:: SAUNA ACCESSORIES





ENHANCE YOUR SAUNA EXPERIENCE

:: SAUNA ACCESSORIES



Model	Item no.
Multicup	94.2534
Multicup with herbs strainer	94.5494
Salt glue, 1 kg pack, for salt bricks and tiles	94.5510
Salt rocks, 1 kg pack, for Multicup	94.2630
Salt tile, 200 x 100 x 25 mm, 20 pcs / box	94.5433
Salt tile, 200 x 200 x 25 mm, 20 pcs / box	94.5430
Salt brick, 200 x 100 x 50 mm, front side raw finish	94.5432
Salt bricks, 200 x 100 x 50 mm, all sides straight cut	94.5426
Wall panel with Himalaya salt bricks, Abachi wood frame	94.5578
Sauna bath robe, size S	94.4360
Sauna bath robe, size M	94.4361
Sauna bath robe, size L	94.4362
Sauna bath robe, size XL	94.4363
Sauna bath robe, size XXL	94.4364
Sauna towel, 70 x 200 cm, white	94.6389
Sauna towel, 70 x 200 cm, anthracite	94.6301



Multicup bowl

- :: Multicup - practical wall-hanging bowl for more fun in your sauna.
- :: May be used for Himalaya salt, brine, herbs, oils. Diameter 16 cm, approx. 0,6 l volume.
- :: High grade stainless steel, suspension and wall-mounting.
- :: Delivery includes 1 kg original Himalaya salt rocks.
- :: Also available with an integrated herbs strainer.



Himalaya salt

- :: Himalaya salt for a wide variety of wellness applications.
- :: Originates from ancient dried seas of the Permian period.
- :: 1 kg packing, optimal for instance for Multicup.

Himalaya salt bricks and tiles

- :: Bricks cut from natural Himalaya rock salt, available in two versions - straight cut on all sides and with raw front side. 20 x 10 x 5 cm.
- :: Alternatively available as tiles - 20 x 20 x 2,5 cm or 20 x 10 x 2,5 cm.
- :: For installation we recommend special salt glue (in 1 kg packs).



Himalaya salt wall panel

- :: Wall panel with Himalaya salt bricks 1080 x 285 x 40 mm.
- :: Filled with straight cut bricks 200x100x50 mm.
- :: For wall mounting installation on suitable surfaces.

Sauna bath robe and towels

- :: Sauna bath robe: with pocket and belt.
- :: Heavy top quality 100 % cotton.
- :: With embroidery "emotion of sauna", white. Washable at 60° C.

- :: Sauna bath towel: premium quality 100% cotton.
- :: With embroidery. White or anthracite colour.
- :: Material: 100 % cotton, washable up to 40 °C





Sauna lamp

- :: Sauna lamp with curved wooden shade 205 x 270 mm, dazzle-free, with splash-protected and heat resistant (T 150 °C) oval lamp.
- :: With oval shape lamp, IP54 class, die-cast aluminium base with matt glass globe and ceramic socket E27, without illuminant.
- :: Alternatively available also without a wooden shade.
- :: Special bulb, mini-size, E27, 40 W, 300°C proof, optionally available.



Thermometer/ Hygrometer

- :: Sauna thermometer, round, wall-mounting, Ø 100 mm.
- :: Measuring range 0 - 120 °C.
- :: Sauna hygrometer, round, wall-mounting, Ø 100 mm.
- :: Measuring range 0 - 100% relative air humidity.
- :: „Made in Germany“ quality.

Combi thermo-/hygrometer

- :: Combi thermo-/hygrometer Ø 100 mm or Ø 160 mm.
- :: For temperature and air humidity measurement.
- :: With highlighted „optimal zones“ for sauna climate.
- :: „Made in Germany“ quality.



Combi thermo/hygrometer

- :: Sauna thermometer and hygrometer mounted in a stylish glass frame with wooden enclosure.
- :: Range 0 - 120 °C / 0 - 100 % rel. air humidity.
- :: Size 180 x 245 mm. Instrument diameter Ø 100 mm.
- :: „Made in Germany“ quality.



Sand timer

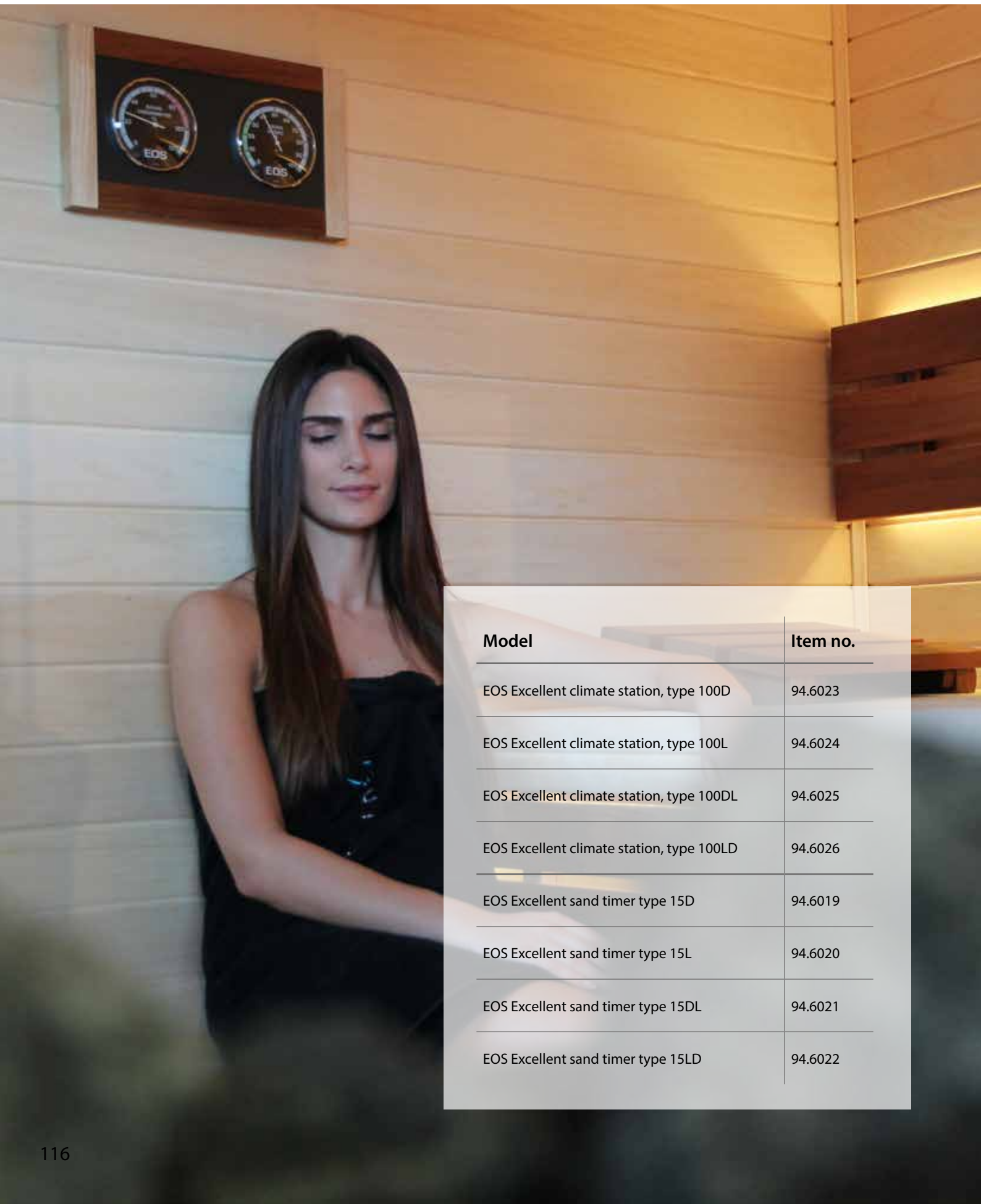
- :: Classic sauna sand time, wood
- :: Contrast sand filling for easy reading
- :: 15 min. runtime

:: SAUNA ACCESSORIES



Modell	Art.-Nr.
Sauna lamp with wooden shade	94.2877
Oval sauna lamp, without diffuser	94.3749
Sauna rules board, design 1 (German)	94.4652
Sauna rules board, design 2 (German)	90.8752
Sauna thermometer	94.6035
Sauna hygrometer	94.6036
Combi thermo/hygrometer Ø 100 mm	90.5523
Combi thermo/hygrometer Ø 160 mm	90.6084
Combi thermo/hygrometer, glass / wood frame	94.4118
Sand timer	90.5518

:: SAUNA ACCESSORIES



Model	Item no.
EOS Excellent climate station, type 100D	94.6023
EOS Excellent climate station, type 100L	94.6024
EOS Excellent climate station, type 100DL	94.6025
EOS Excellent climate station, type 100LD	94.6026
EOS Excellent sand timer type 15D	94.6019
EOS Excellent sand timer type 15L	94.6020
EOS Excellent sand timer type 15DL	94.6021
EOS Excellent sand timer type 15LD	94.6022



EOS Excellent climate station

- :: Exclusive combination of thermometer and hygrometer.
- :: Round instruments in a metal plate with anthracite pearl-effect finish and an exclusive frame cut of massive walnut, acer or walnut/acer combinations.
- :: Ø 100 mm thermometer and hygrometer, range 0 - 120 °C / 0 - 100% rel. air humidity. Size 180 x 245 mm.
- :: Available in 4 design versions with walnut, acer or walnut / acer frame:
 - Typ 100D - walnut frame
 - Typ 100L - acer frame
 - Typ 100 DL - walnut vertical, acer horizontal
 - Typ 100 LD - acer vertical, walnut horizontal

EOS Excellent sand timer

- :: Exclusive sand timer for Sauna in stylish, cubistic design. With a high contrast sand filling.
- :: Hand-cut from a massive walnut or acer wood.
- :: With an innovative automatic fixation in vertical position thanks to the hidden magnet.
- :: Available in 4 design versions with walnut, acer or walnut / acer frame:
 - Typ 15D - walnut
 - Typ 15L - acer
 - Typ 15 DL - walnut front, acer base
 - Typ 15 LD - acer front, walnut base





Sauna set N I and N II

- :: Set N I, 6 parts: sauna bucket 5 l , PVC liner, ladle, sand timer, combi thermo/hygrometer Ø 100 mm , sauna rules board (German). Gift box.
- :: Set N II, 5 parts: sauna bucket 5 l , PVC bucket liner, ladle, sand timer, combi thermo/hygrometer Ø 100 mm. Gift box.

Sauna set Stainless Steel

- :: Sauna bucket 4,5 l, stainless steel with wooden handle
- :: Stainless steel ladle with wooden handle.



Drench bucket

- :: Drench bucket made of Red Cedar wood, with metal rings.
- :: Special level with pull chain makes water splash easy and effortless.
- :: Wall mounting frame and other mounting parts made of stainless steel.
- :: Integrated valve with automatic refilling, 1/2" tube nozzle connection.
- :: Water volume adjustable 4,5 to 7 l. Requires permanent water connection.

Ergonomic sauna backrest

- :: Ergonomically shaped backrest, poplar.
- :: With leather anti-skid strips.
- :: Size HWD 520 x 400 x 70 mm



Silicone cable

- :: Premium quality cable with heat-resistant silicone coating.
- :: Ideal for sauna & steam equipment connection.
- :: Available in various types for connection of heaters, control units, sensors, lighting and other equipment.
- :: In standard 2 or 5 m cuts, custom length available on request.

:: SAUNA ACCESSORIES

Model	Item no.
Sauna Set N I, 6 items	94.2863
Sauna Set N II, 5 items	94.2864
Sauna Set "Stainless Steel" (bucket + ladle)	94.4122
Ergonomically shaped backrest	94.4121
Drench bucket	94.6412

Model	Length	Item no.
Silicone cable 3 x 1,5 mm ²	5 m	94.3737
Silicone cable 5 x 1,5 mm ²	2 m	94.2440
	5 m	94.2872
Silicone cable 5 x 2,5 mm ²	2 m	94.2437
	5 m	94.2871
Silicone cable 5 x 4 mm ²	5 m	94.2870
Silicone cable 5 x 6 mm ²	5 m	94.2869
Silicone cable 2 x 0,5 mm ² rot	5 m	94.2866
Silicone cable 2 x 0,5 mm ² weiß	5 m	94.2867
Silicone cable 3 x 0,5 mm ² rot	5 m	94.2868

:: SAUNA ACCESSORIES



Model	Item no.
Door hinge for 6 - 8 mm all-glass doors	94.4345
Double hinge for 6 - 8 mm all-glass doors	94.5937
Door handle Premium	94.5320
Door magnet lock 95N, Ø15 x 8 mm	94.4124
Door magnet lock 150N, Ø15 x 8 mm	94.4125
U-shape metal clip for 6 mm glass	94.4120
U-shape metal clip for 8 mm glass	94.4126
Ventilation fan for sauna, 230 V / 22 W	94.5774

Door hinge for glass doors

- :: Door hinge for 6 - 8 mm glass doors.
- :: Aluminium zinc alloy.
- :: Max load: 28 kg/hinge.

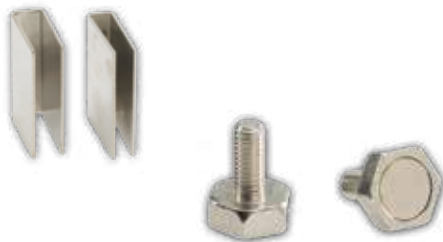


Double hinge for glass doors

- :: Door hinge for 6 - 8 mm glass doors
- :: Opening angle 180°
- :: Aluminium zinc alloy.
- :: Max load: 28 kg/piece.
- :: Designed for connection of the glass door sheet with another glass sheet.

Door handle Premium

- :: Premium door handle set for glass doors.
- :: Stylish, timeless design.
- :: Beech wood inside, metal outside. With mounting parts.
- :: Drilling distance 200 mm, Ø 7 mm hole, M6 thread.
- :: Overall height 260 mm, handle diameter Ø 30 mm
- :: Distance between handle and glass 40 mm



Door magnet lock

- :: Magnet lock 95N or 150N, with threaded pin.
- :: For glass doors. Ø 15 x 8 mm size.
- :: U-shape metal clip for fitting on glass sheet. For 6 mm and 8 mm glass sheets.

Sauna ventilation fan

- :: Ventilation fan, suitable for saunas up to 16 m³, IP55 class, capacity: 160 cbm/h, with bearing.
- :: For larger saunas rooms several fans may be installed in parallel connection.
- :: 230 V 1N AC / 22 W.
- :: Allowed ambient temperature range: -10°C to +70 °C.



Sauna door Premium

- :: All-glass door, 8 mm safety glass, incl. hinges and sealing gasket, premium door handle (wood/metal), magnet door lock.
- :: Clear glass, glass sheet W x H 625 x 1844 mm
- :: Frame size W x H 715 x 1934 mm



Sauna door Basic

- :: All-glass door, 6 mm safety glass, incl. hinges and sealing gasket, door knob and magnet lock.
- :: Glass - clear or bronzed.
- :: Glass sheet W x H 625 x 1844 mm
- :: Frame size W x H 715 x 1934 mm

Sauna stones

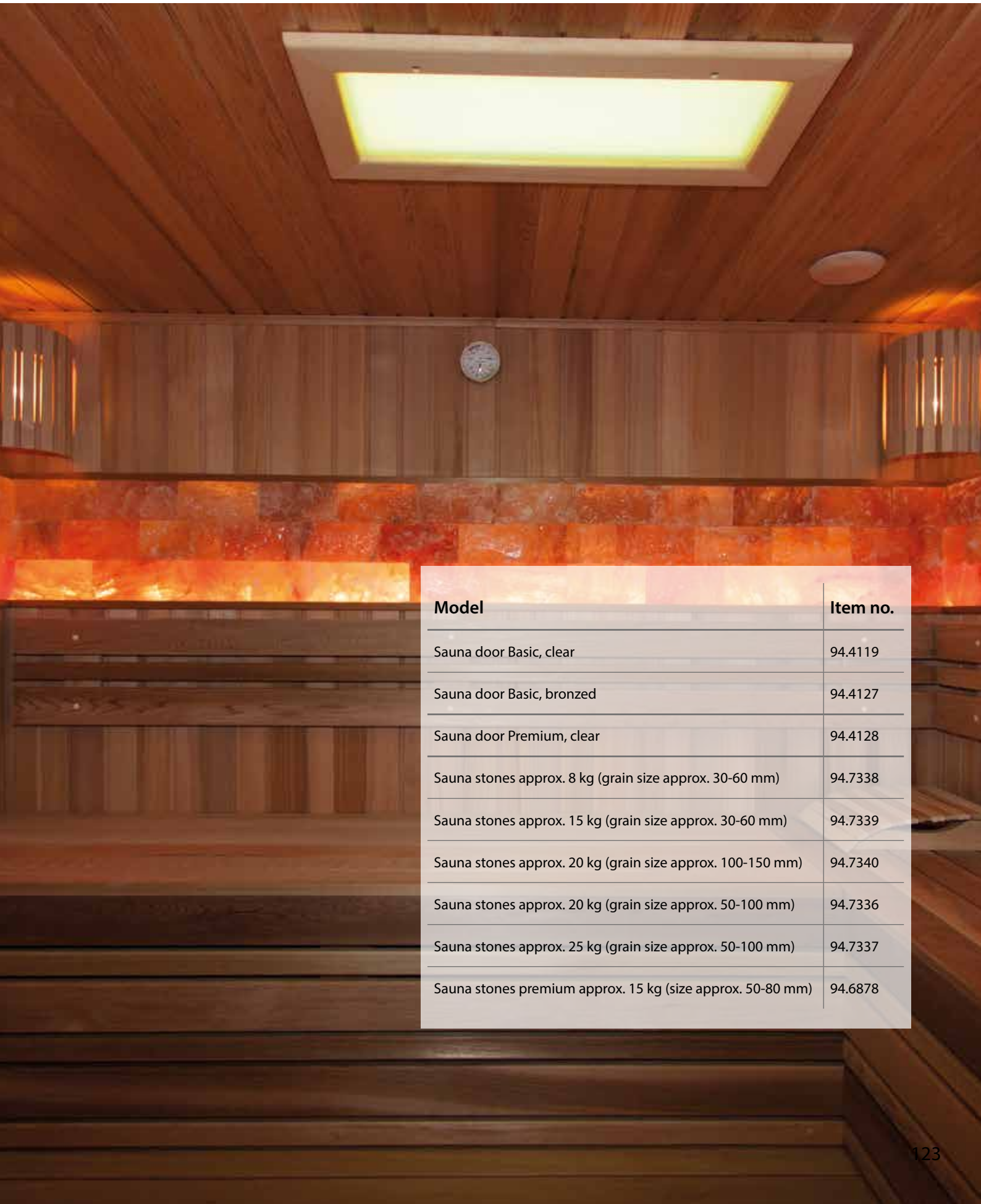
- :: Stones for sauna.
- :: Gabbro or olivine diabase.
- :: Grain size approx. 30 - 150 mm.
- :: For all EOS sauna heaters.



Sauna stones (premium)

- :: Design sauna stones of quartz. Special rounded shape.
- :: Grain size approx. 50 - 80 mm.
- :: 15 kg package.
- :: Colour: white / beige

:: SAUNA ACCESSORIES



Model	Item no.
Sauna door Basic, clear	94.4119
Sauna door Basic, bronzed	94.4127
Sauna door Premium, clear	94.4128
Sauna stones approx. 8 kg (grain size approx. 30-60 mm)	94.7338
Sauna stones approx. 15 kg (grain size approx. 30-60 mm)	94.7339
Sauna stones approx. 20 kg (grain size approx. 100-150 mm)	94.7340
Sauna stones approx. 20 kg (grain size approx. 50-100 mm)	94.7336
Sauna stones approx. 25 kg (grain size approx. 50-100 mm)	94.7337
Sauna stones premium approx. 15 kg (size approx. 50-80 mm)	94.6878

:: IMPORTANT NOTES

SAUNA CONTROL UNITS - FUNCTIONS AND FEATURES

	Dimensions HWD, mm	electronic temperature control	Pre-set timer 0-24 h	Heating time limitation, hours	Cabin light control	Cabin light output dimmable	Display of time / pre-set timer 24 h	Temperature control range, dry sauna, °C	Temperature control range, humid mode, °C	LCD multi-functional display (illuminated)	Colour TFT display	Colour touchscreen display	Fan control	Speed control for fan output	Support for the 2nd temp. sensor	Support for the optional humidity sensor	Sauna dry program	Data retention after power loss (24 h)	Power extension 18/27/36 kW with LSG box	Optional coloured light control	For dry & humid sauna operation	Remote switching	Max switching capacity, kW	
EOS EmoTec/ EmoStyle D	display panel: 127 x 130 x 25 relay block: 270 x 300 x 100	■	■	6/12/∞	■	■	■	30-115			■		■	■	■			■	■	■		■	9	
EOS EmoTec/ EmoStyle H		■	■	6/12/∞	■	■	■	30-115	30-70		■		■	■	■	■	■	■	■	■	■	■	9	
EOS EmoTouch 3	display panel: 141 x 201	■	■	6/12/∞	■	■	■	30-115	30-70			■	■	■	■	■	■	■	■	■	■	■	9	
EOS Econ D1	220 x 250 x 60	■		6	■		■	40-115		■								■					9	
EOS Econ H1		■		6	■		■	40-115	30-70	■							■	■			■		9	
EOS Econ D2		■	■	6/12	■		■	40-115		■								■	■				9	
EOS Econ H2		■	■	6/12	■		■	40-115	30-70	■								■	■	■		■	9	
EOS Econ D3		■	■	6/12/∞	■		■	40-115		■					■			■	■				9	
EOS Econ H3		■	■	6/12/∞	■		■	40-115	30-70	■					■	■	■	■	■			■	9	
EOS Econ D4		■	■	6/12/∞	■	■	■	40-115		■			■	■	■			■	■				■	9
EOS Econ H4		■	■	6/12/∞	■	■	■	40-115	30-70	■			■	■	■	■	■	■	■			■	■	9
EmoTec® L 09		240 x 230 x 70	Relay box with switching capacity 9 kW																				9	
LSG 18	270 x 300 x 100	Contactor box with switching capacity 18 kW																				18		
LSG 18 H		Contactor box as LSG 18, but with an extra 4 kW output for vaporizer																				18		
LSG 36		Contactor box with switching capacity 36 kW																				36		
LSG 36 H	450 x 300 x 142	Contactor box as LSG 36, but with an extra 4 kW output for vaporizer																				36		

HEATER POWER SELECTION AND CONNECTIONS

Heating power kW	Cabin size in m ³ (based on recommendations of RAL for indoor saunas)														Min. cable cross section in mm ²		
	3-5	4-6	6-8	7-10	9-14	14-18	18-25	24-30	24-34	35-40	40-50	50-65	65-75	Connection 400 V 3N AC	Connection 230 V AC	Fuse protection A	
3,0	■														3 x 1,5 ²	1 x 16	
4,5		■												5 x 2,5 ²		3 x 16	
6,0			■														
7,5				■													
9,0					■								5 x 4 ²		3 x 25		
12,0						■											
15,0							■						5 x 6 ²		3 x 35		
18,0								■									
21,0									■								
24,0										■			5 x 10 ²		3 x 50		
27,0											■						
30,0												■	min. 5 x 10 ²		3 x 63		
36,0												■					

IMAGES OF SAUNA AND STEAM ROOM CABINS SHOW PROJECTS REALIZED BY:

Alpha Industries AWT

Alex

Arend Saunabau

Butenas Saunabau

Corso Saunamanufaktur

ES Design

EOS Premium Spa Technology

Hüttner

Kugel Sauna

KWS SCHIESTL GES.M.B.H.

P & A Engineering

Promet Spa Wellness

Saunamaster



EOS Saunatechnik GmbH

Schneiderstriesch 1
35759 Driedorf, Germany

Tel. +49 (0)2775 82-0
Fax +49 (0)2775 82-431

E-Mail: info@eos-sauna.de
Internet: www.eos-sauna.de